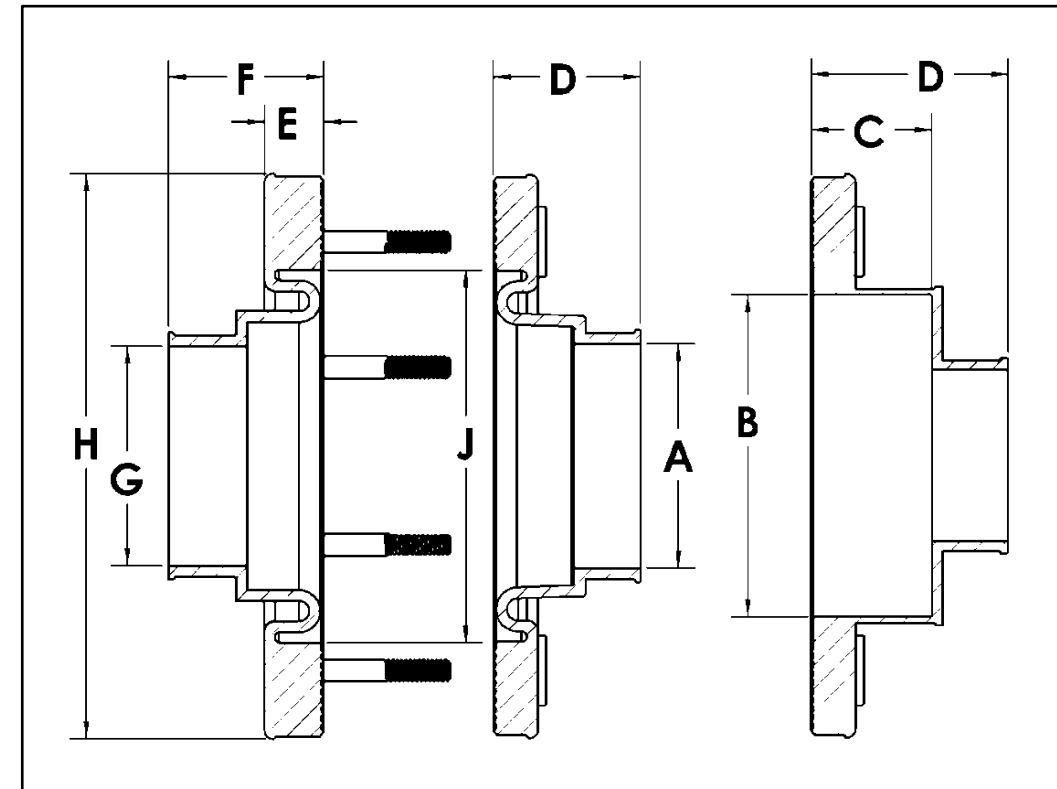


## Traditional Style

### 8 Stud Double Sided Dimensional Data

Part Number	A	B	C	D	E	F	G	H	J
T-8D-1.3				1.625		1.625		6.375	3.600
T-8D-1.5				1.625		1.625		6.375	3.600
T-8D-1.6	1.625			1.625		1.625	1.625	6.375	3.600
T-8D-1.7	1.725			1.625		1.625	1.725	6.375	3.600
T-8D-1.8				1.625		1.625		6.375	3.600
T-8D-1.9	1.950			1.625		1.625	1.950	6.375	3.600
T-8D-2.0	2.050			1.625		1.625	2.050	6.375	3.600
T-8D-2.2	2.190			1.625		1.625	2.190	6.375	3.600
T-8D-2.3				1.625		1.550		6.375	3.600
T-8D-2.4	2.450			1.625		1.550	2.450	6.375	3.600
T-8D-2.5	2.550			1.625		1.750	2.550	6.375	3.600
T-8D-2.7	2.725			1.625		1.750	2.725	6.375	3.600
T-8D-2.9	2.900			1.625		1.750	2.900	6.375	3.600
T-8D-3.0	3.030			1.625		1.750	3.030	6.375	3.600
T-8D-3.3				1.625		1.750		6.375	3.600
T-8D-3.6	3.600			1.625		1.750	3.600	6.375	3.600



**Traditional Studed Penetration Fitting**

Note: Fittings can be ordered in either Alcryn or Fuel-Thane materials.  
 Place a "U" in the part number when ordering Fuel-Thane parts.  
 Example: U8D-1.3