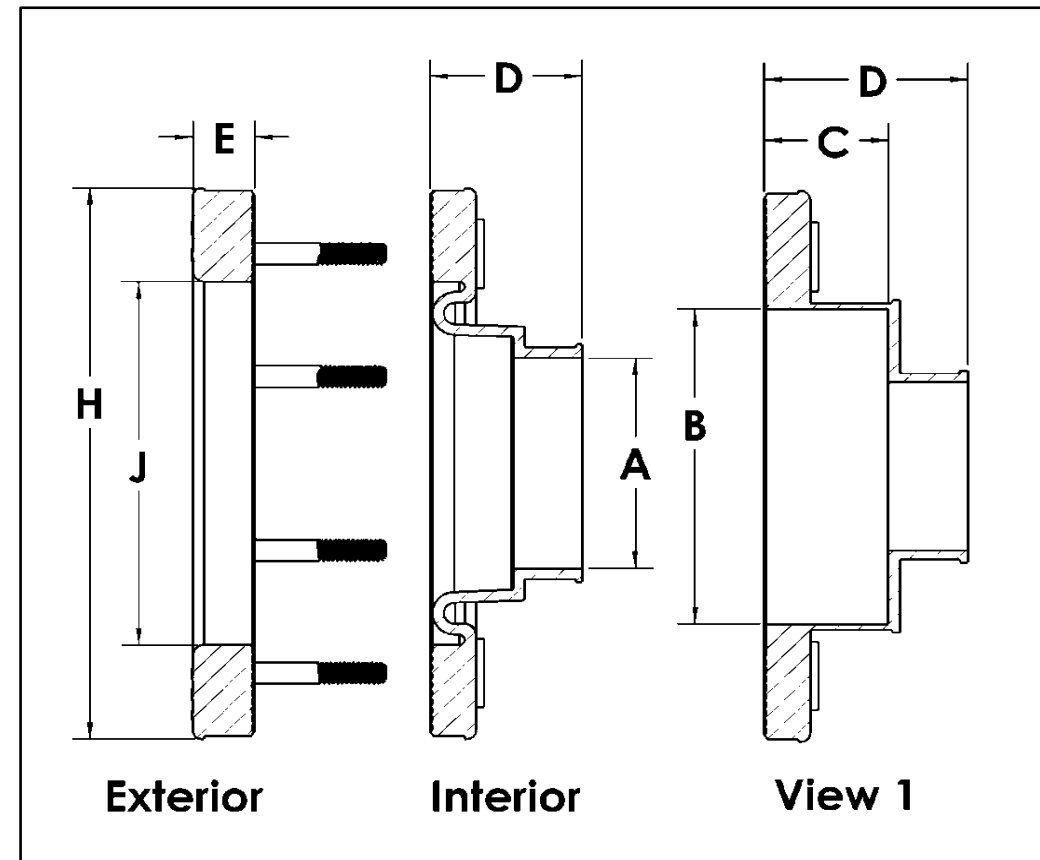


## Traditional Style

### 4 Stud Single Sided Dimensional Data

| Part Number | A                                      | B | C | D     | E     | H     | J     |  |
|-------------|--|---|---|-------|-------|-------|-------|--|
| T-4S-1.1    | 1.200                                  |   |   | 1.625 | 0.250 | 4.467 | 3.282 |  |
| T-4S-1.2    |  |   |   | 1.625 | 0.250 | 4.467 | 3.282 |  |
| T-4S-1.3    |  |   |   | 1.625 | 0.250 | 4.467 | 3.282 |  |
| T-4S-1.4    | 1.390                                  |   |   | 1.625 | 0.250 | 4.467 | 3.282 |  |
| T-4S-41     | See 1.4 above with insert to 1.1       |   |   |       |       |       |       |  |
| T-4S-42     | See 1.4 above with insert to 1.2       |   |   |       |       |       |       |  |
| T-4S-49     | See 1.4 above with insert to 0.9       |   |   |       |       |       |       |  |
| T-4S-419    | See 1.4 above with insert to 1.1 & 0.9 |   |   |       |       |       |       |  |



**Traditional Studed Penetration Fitting**

Note: Fittings can be ordered in either Alcryn or Fuel-Thane materials.  
 Place a "U" in the part number when ordering Fuel-Thane parts.  
 Example: U4S-1.1