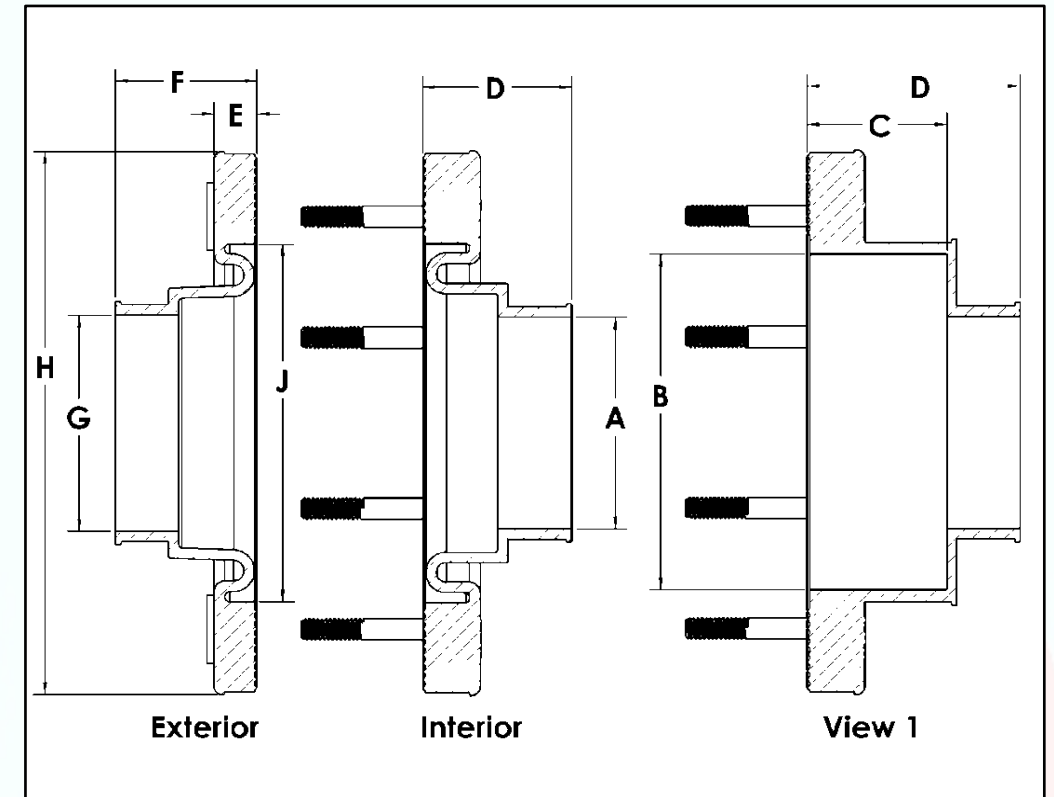


4 Stud Double Sided Dimensional Data

Part Number	A	B	C	D	E	F	G	H	J
4D-1.1	1.200			1.625		1.625	1.200	4.467	n/a
4D-1.2				1.625		1.625		4.467	n/a
4D-1.3				1.625		1.625		4.467	n/a
4D-1.4	1.390			1.625		1.625	1.390	4.467	n/a
4D-41	See 1.4 above with insert to 1.1								
4D-42	See 1.4 above with insert to 1.2								
4D-49	See 1.4 above with insert to 0.9								
4D-419	See 1.4 above with insert to 1.1 & 0.9								

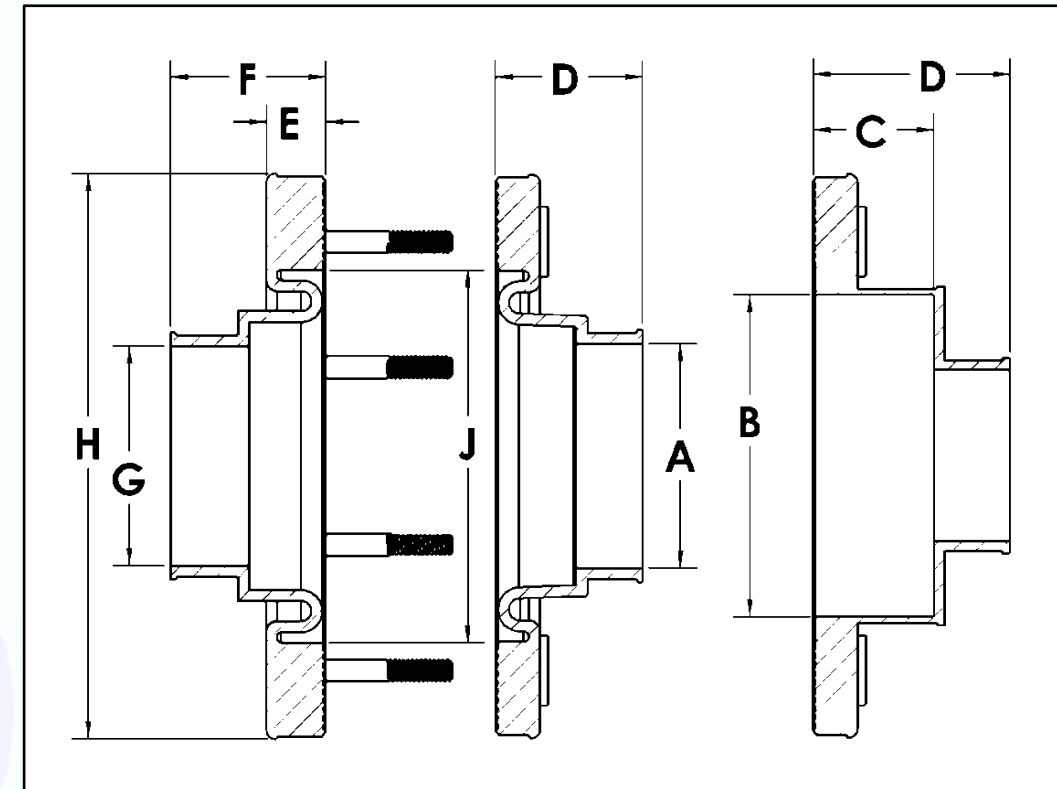
Note: Fittings can be ordered in either Alcryn or Fuel-Thane materials.
 Place a "U" in the part number when ordering Fuel-Thane parts.
 Example: U4D-1.1



Inverted Studed Penetration Fitting

4 Stud Double Sided Dimensional Data

Part Number	A	B	C	D	E	F	G	H	J
4D-1.1	1.200			1.625		1.625	1.200	4.467	n/a
4D-1.2				1.625		1.625		4.467	n/a
4D-1.3				1.625		1.625		4.467	n/a
4D-1.4	1.390			1.625		1.625	1.390	4.467	n/a
4D-41	See 1.4 above with insert to 1.1								
4D-42	See 1.4 above with insert to 1.2								
4D-49	See 1.4 above with insert to 0.9								
4D-419	See 1.4 above with insert to 1.1 & 0.9								



Traditional Studed Penetration Fitting

Note: Fittings can be ordered in either Alcryn or Fuel-Thane materials.
 Place a "U" in the part number when ordering Fuel-Thane parts.
 Example: U4D-1.1