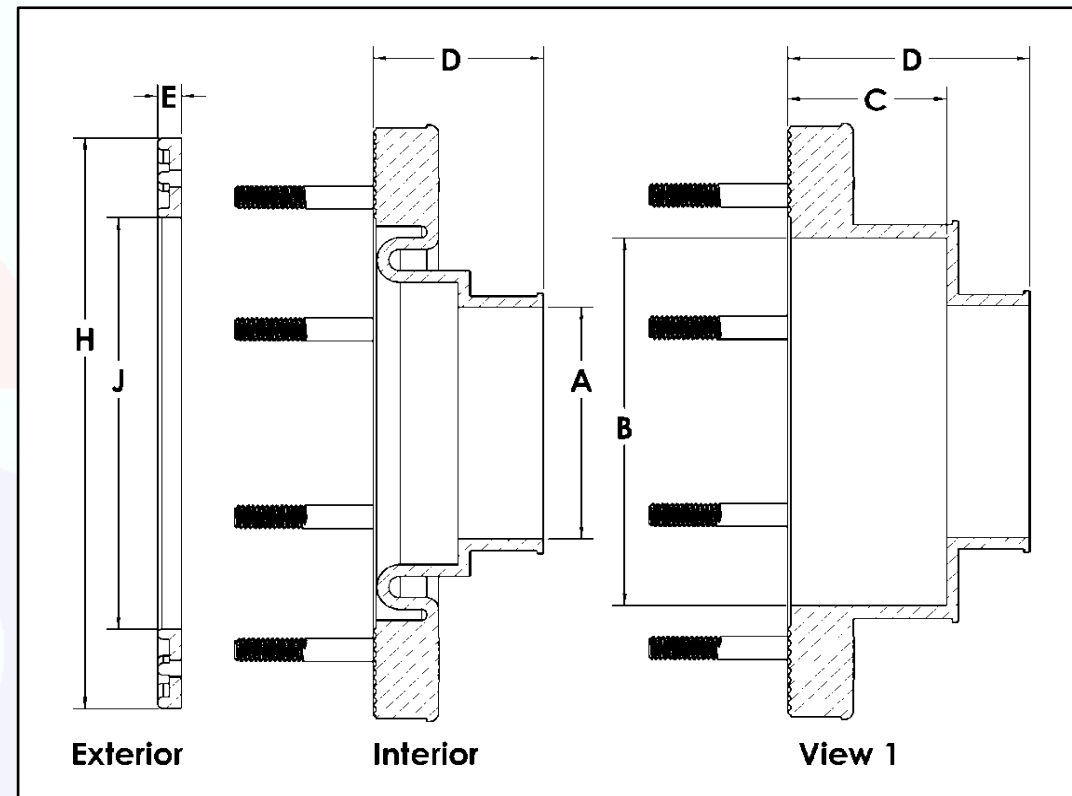


## Inverted Style

### 12 Stud Single Sided Dimensional Data

Part Number	A	B	C	D	E	H	J
12S-5.2	5.168			1.780	0.250	9.250	8.062
12S-6.3	6.350			1.780	0.250	9.250	8.062
12S-6.7	6.675			1.780	0.250	9.250	8.062



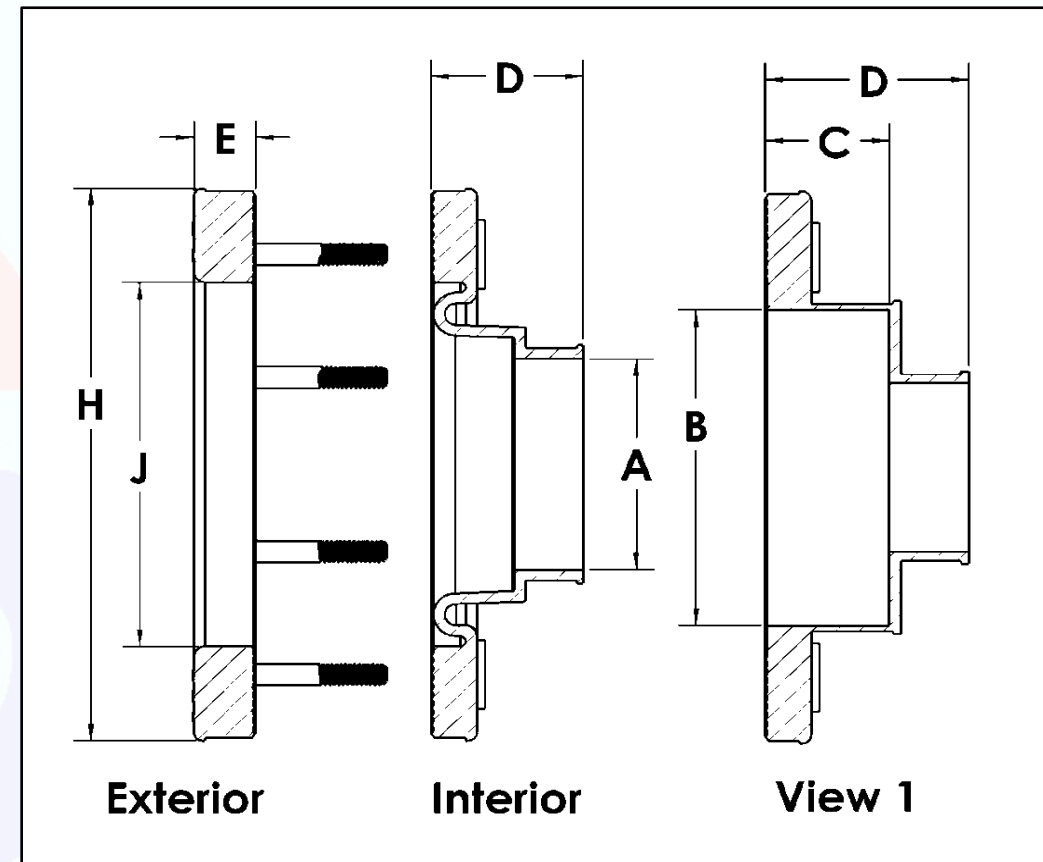
**Inverted Studed Penetration Fitting**

Note: Fittings can be ordered in either Alcryn or Fuel-Thane materials.  
Place a "U" in the part number when ordering Fuel-Thane parts.  
Example: U12S-5.2

# Traditional Style

## 12 Stud Single Sided Dimensional Data

Part Number	A	B	C	D	E	H	J
T-12S-5.2	5.168			1.780	0.250	9.250	8.062
T-12S-6.3	6.350			1.780	0.250	9.250	8.062
T-12S-6.7	6.675			1.780	0.250	9.250	8.062



Note: Fittings can be ordered in either Alcryn or Fuel-Thane materials.  
Place a "U" in the part number when ordering Fuel-Thane parts.  
Example: U12S-5.2

**Traditional Studded Penetration Fitting**