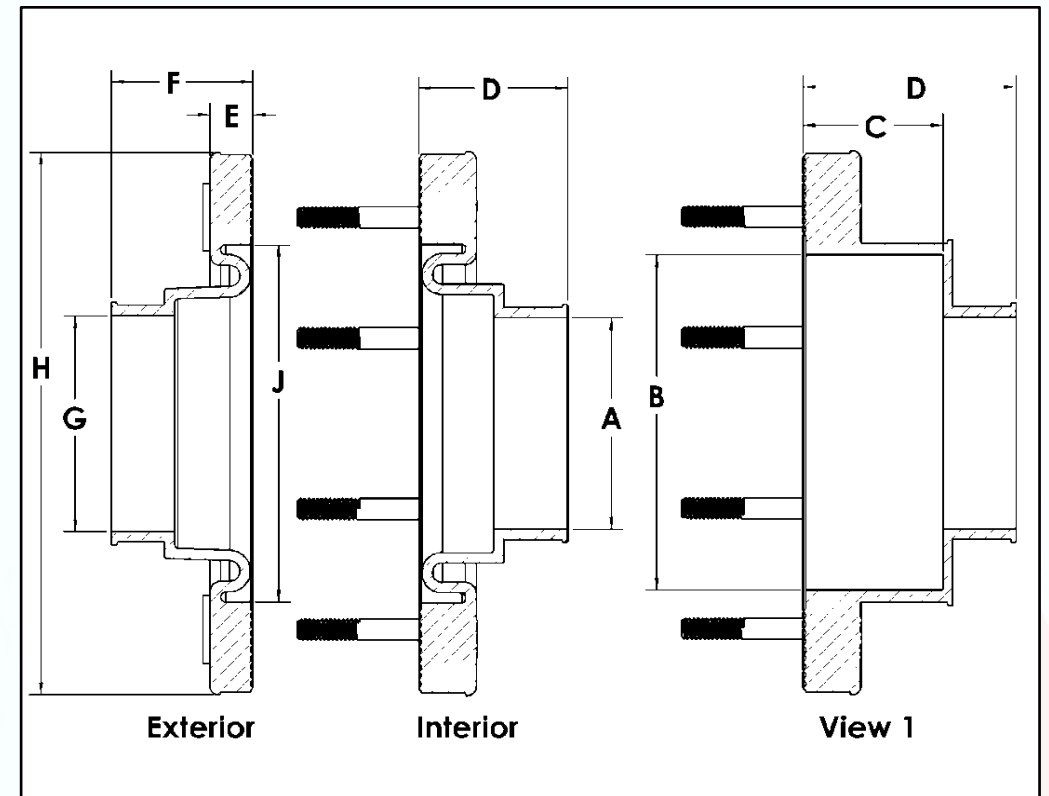


Inverted Style

12 Stud Double Sided Dimensional Data

Part Number	A	B	C	D	E	F	G	H	J
12D-5.2	5.168			1.780		1.780	5.168	9.250	6.675
12D-6.3	6.350			1.780		1.780	6.350	9.250	6.675
12D-6.7	6.675			1.780		1.780	6.675	9.250	6.675



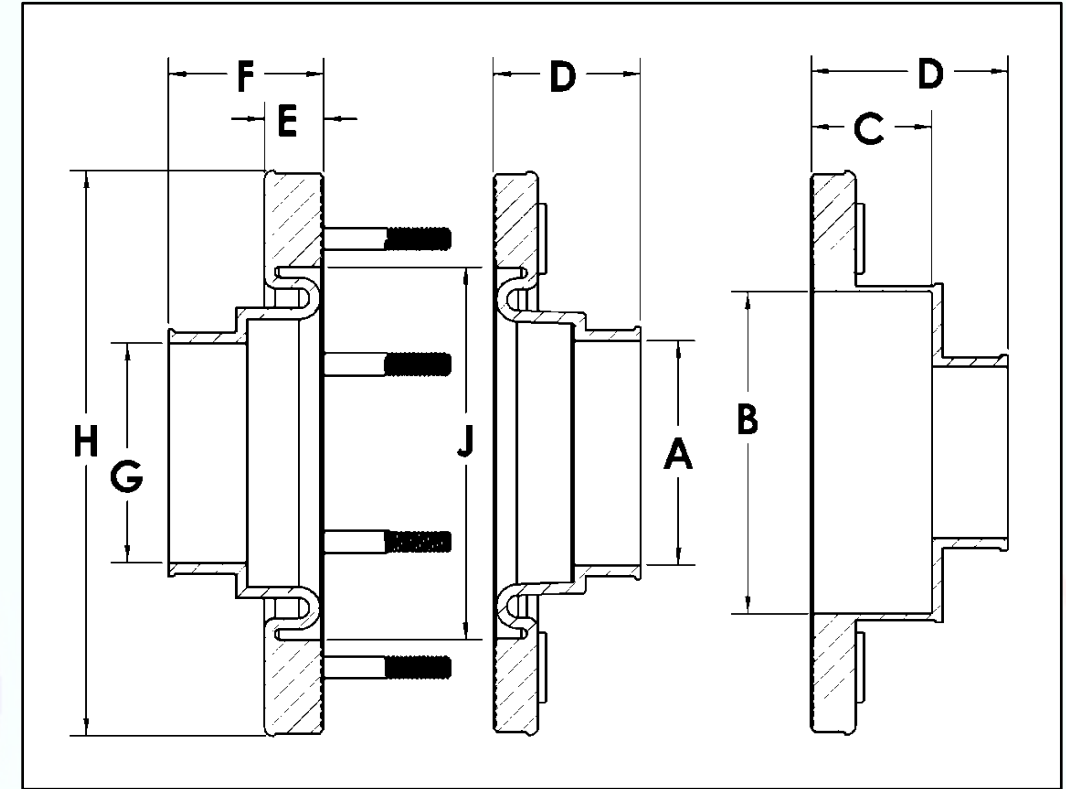
Inverted Studed Penetration Fitting

Note: Fittings can be ordered in either Alcryn or Fuel-Thane materials.
 Place a "U" in the part number when ordering Fuel-Thane parts.
 Example: U12D-5.2

Traditional Style

12 Stud Double Sided Dimensional Data

Part Number	A	B	C	D	E	F	G	H	J
T-12D-5.2	5.168			1.780		1.780	5.168	9.250	6.675
T-12D-6.3	6.350			1.780		1.780	6.350	9.250	6.675
T-12D-6.7	6.675			1.780		1.780	6.675	9.250	6.675



Traditional Studed Penetration Fitting

Note: Fittings can be ordered in either Alcryn or Fuel-Thane materials.
 Place a "U" in the part number when ordering Fuel-Thane parts.
 Example: U12D-5.2