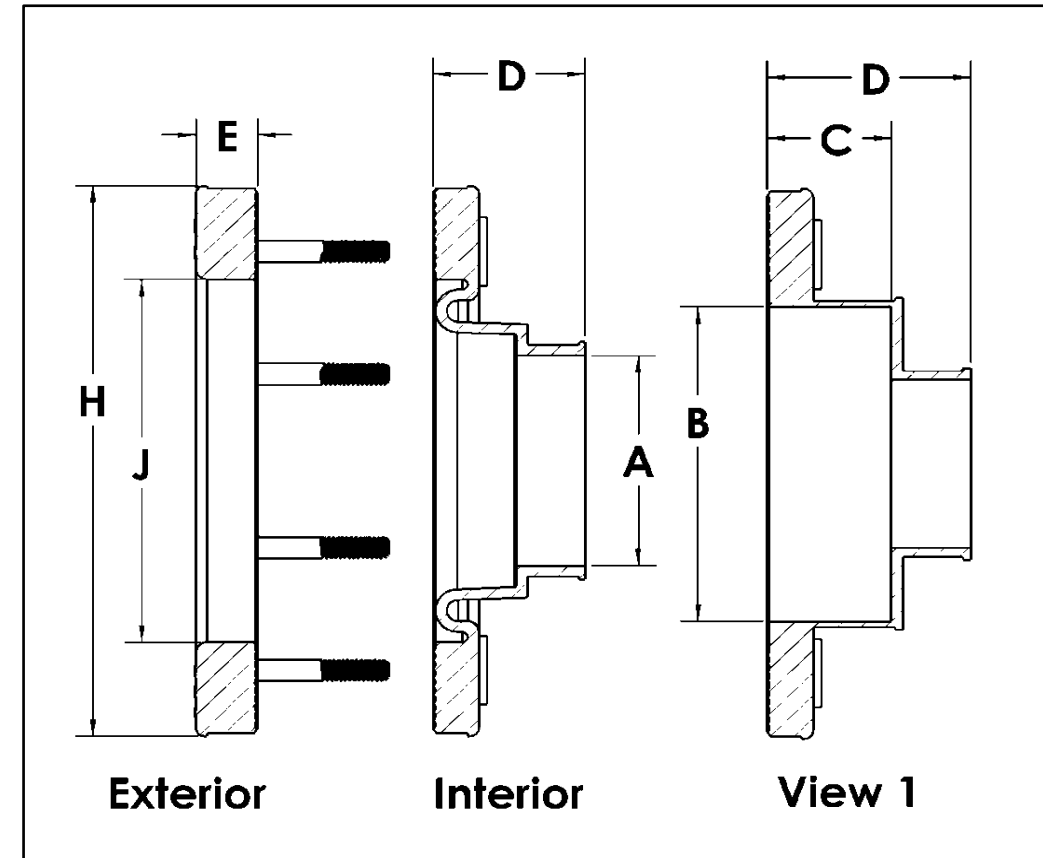


## Traditional Style

### 10 Stud Single Sided Dimensional Data

Part Number	A	B	C	D	E	H	J
T-10S-3.6	3.600			1.660	0.250	8.000	6.875
T-10S-3.8	3.800			1.660	0.250	8.000	6.875
T-10S-4.4	4.380			1.660	0.250	8.000	6.875
T-10S-4.5	4.550			1.660	0.250	8.000	6.875
T-10S-4.6x2.0	2.050	4.650	1.640	2.380	0.250	8.000	6.875
T-10S-4.6x2.5	2.550	4.650	1.640	2.380	0.250	8.000	6.875
T-10S-4.8	4.780			1.660	0.250	8.000	6.875
T-10S-5.0				1.660	0.250	8.000	6.875

See View 1



Traditional Studed Penetration Fitting

Note: Fittings can be ordered in either Alcryn or Fuel-Thane materials.  
 Place a "U" in the part number when ordering Fuel-Thane parts.  
 Example: U10S-3.6