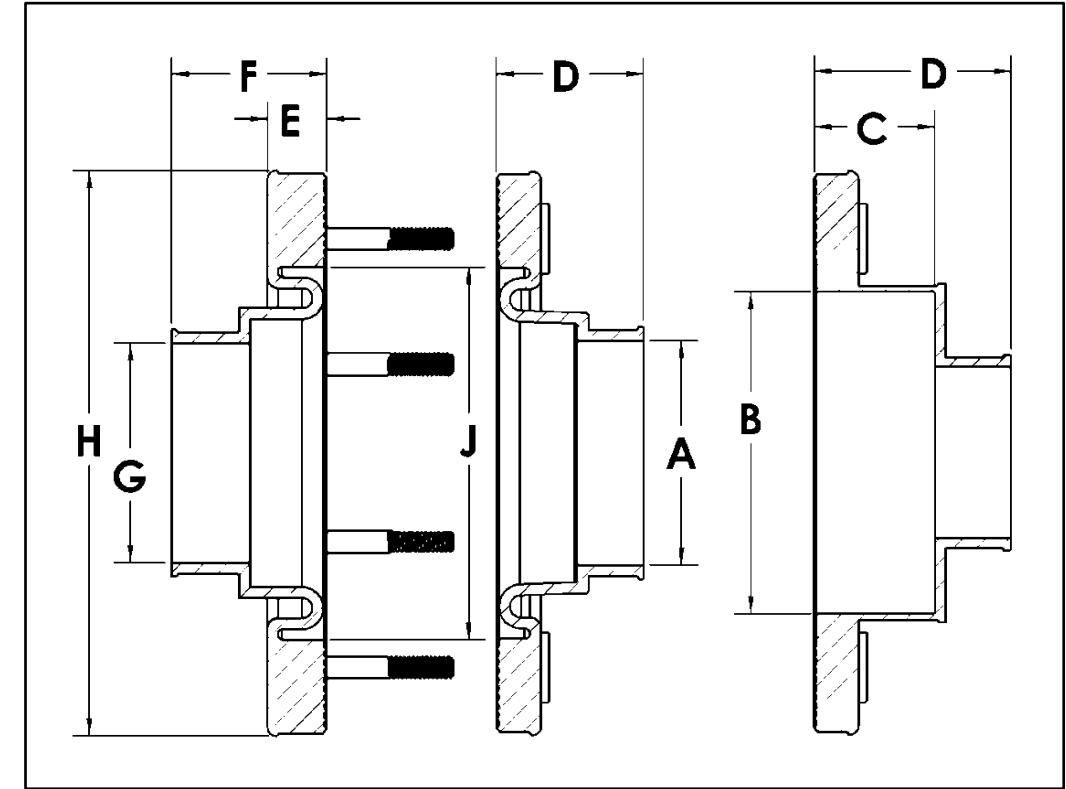


Traditional Style

10 Stud Double Sided Dimensional Data

Part Number	A	B	C	D	E	F	G	H	J
T-10D-3.6	3.600			1.660		1.698	3.600	8.000	4.800
T-10D-3.8	3.800			1.660		1.698	3.800	8.000	4.800
T-10D-4.4	4.380			1.660		1.698	4.380	8.000	4.800
T-10D-4.5	4.550			1.660		1.698	4.550	8.000	4.800
T-10D-4.6x2.0	2.050	4.650	1.640	2.380		1.698	4.800	8.000	4.800
T-10D-4.6x2.5	2.550	4.650	1.640	2.380		1.698	4.800	8.000	4.800
T-10D-4.8	4.780			1.660		1.698	4.780	8.000	4.800
T-10D-5.0				1.660		1.698		8.000	4.800

See View 1



Traditional Studed Penetration Fitting

Note: Fittings can be ordered in either Alcryn or Fuel-Thane materials.
 Place a "U" in the part number when ordering Fuel-Thane parts.
 Example: U10D-3.6