

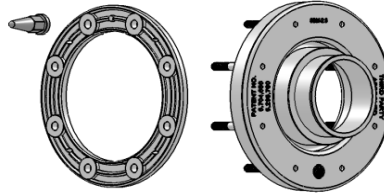
Penetration Fittings, Terminating & Test Reducers for

Smith Fibercast

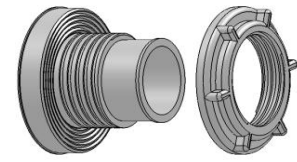
US List Prices Effective 7/1/08



Diversified Products Mfg. Inc.
Oroville, California, USA
www.dpm-llc.com
Phone: 1-530-534-3966
Fax: 1-530-534-7404



Sump Exterior Sump Interior



Sump Exterior Sump Interior

Pipe Description

or

Pipe Product Number

6" Red Thread IIA

4" Red Thread IIA

3" Red Thread IIA

2" Red Thread IIA

Electrical Conduits

1" PVC Coated Conduit

1" Rigid Steel Conduit

32 MM Pipe

3/4" PVC Coated Conduit

3/4" Rigid Steel Conduit

1" Conduit w 3/4" PVC Insert

1" Conduit w 3/4" Insert

1" Conduit w/ 3/4 & 1/2 Coated Inserts

1" Conduit w/ 3/4 & 1/2 Inserts

Studded Penetration Fittings

Prod #	US List	Any Qty	Distributor Packs
		Qty	US List
12S-6.7	\$92.61	12	\$85.20
10S-4.5	\$34.58	10	\$31.81
8S-3.6	\$27.16	24	\$24.99
8S-2.4	\$27.16	24	\$24.99
4S-1.4	\$22.20	36	\$20.42
4S-1.4	\$22.20	36	\$20.42
4S-1.3	\$22.20	36	\$20.42
4S-1.2	\$22.20	36	\$20.42
4S-1.1	\$22.20	36	\$20.42
4S-42	\$24.70	36	\$22.72
4S-41	\$24.70	36	\$22.72
4S-429	\$27.70	36	\$25.48
4S-419	\$27.70	36	\$25.48

Threaded Penetration Fittings

Threaded Prod #	Any Qty US List	Distributor Packs	US List
		Qty	
n/a	n/a	n/a	n/a
B6-4.5	\$32.21	25/30/50	\$29.64
B6-3.6	\$32.21	25/30/50	\$29.64
B6-2.4	\$32.21	25/30/50	\$29.64
B2-1.4	\$22.20	24/144	\$20.42
B2-1.4	\$22.20	24/144	\$20.42
B2-1.3	\$22.20	24/144	\$20.42
B2-1.2	\$22.20	24/144	\$20.42
B2-1.1	\$22.20	24/144	\$20.42
B2-42	\$24.70	24/144	\$22.72
B2-41	\$24.70	24/144	\$22.72
B2-429	\$27.20	24/144	\$25.02
B2-419	\$27.20	24/144	\$25.02

Terminating & Test Reducers

Application	Prod #	Base	"HP" Add \$	"A" Add \$
6" over 4"	RA 6.7x4.5	\$25.00	\$15.00	\$6.30
4" over 3"	RA 4.5x3.6	\$21.50	\$15.00	\$6.30
Custom 3.8" over 2.4"	RA 3.8x2.4	\$37.00	\$15.00	\$6.30
3" over 2"	RA 3.6x2.4	\$18.50	\$15.00	\$6.30
2 ft Long Crossover Tubing	Xover-2ft	\$11.50		
2 ft Long Crossover Test Tubing	Xover-Test	\$27.95		



All terminating and test reducers are provided with Worm Gear Clamps and are rated to 10 PSIG operating Pressure. High Pressure Models are rated to 35 PSIG and include T Bolt Clamps add "HP" to the end of the product number. For molded in air test valves add "A" to product numbers. **Example RA 3.6x2.4HPA**

Terms 3% 10 days Net 30 days

Freight 100% freight credit on shipments of \$2500 net or more to one destination within the USA

Freight is Billed to Customers UPS account number

Discounts per Distributor Agreement

Note: Above Prices are for "Competitive" Single Sided Penetrations. DPM offers a complete line of Double Sided, Filled and Monitored Penetration Fittings. Some fittings have a 20 year Parts & Labor Warranty available (USA Installations Only) Call For Literature or Pricing