

# Repair Products

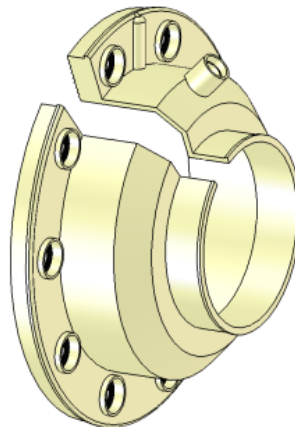
## Spill Container Liner



### Features

- Available for all known spill containers
- Standard 5 gallon size, 15 gallon size available
- Lifetime warranty available
- Installs in 1 hour without breaking ground

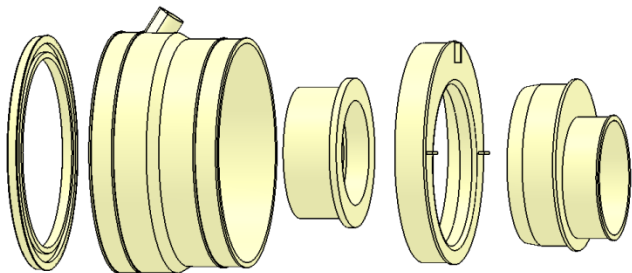
## Traditional Repair Kit for Perpendicular Entries



### Features

- Available in split and non-split configurations
- Molded in Fill and Vent Ports
- Works for perpendicular entries, for Environ, APT, and OPW Flexworks studded penetrations

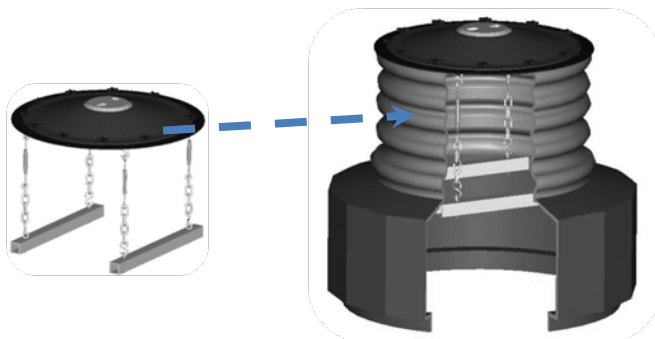
## Multi-Sync Repair Kit for Perpendicular and Non-Perpendicular Entries



### Features

- No Tek Screws to add potential leak paths
- Same foot print as existing fitting
- Easily repairs all off angle applications
- Same kit repairs perpendicular and non-perpendicular applications
- Available for all manufacturers

## Sump Lid Repair Kit



### Features

- Installs in minutes
- Field adjustable clamping device
- Fits sump openings from 22" to 40"
- Available in round or oval configurations

## Repair Products

### DPM Support Products



#### Features

- UL listed Polysulfide fill material
- Proven reliability
- Refer to DPM Support Products literature for detailed information on the individual product

### Split Reducers and Inserts



Split eccentric reducer with test assembly



Split concentric insert

#### Features

- Complete line of eccentric and concentric reducers
- Easily bonds together with DPM's Zip-Tite liquid solvent welder
- Inserts available for all known applications as well as custom
- Plugs available in a variety of sizes for custom field drilling

### 6 Pack Repair Kits



#### Features

- Reduces overall costs
- Includes 6 fittings and the materials to install them
- All repair kits are available in 6 packs

### Technician's Manual



#### Features

- Complete comprehensive manual for the identification and repair of all known situations in the field
- Addresses sumps, sump lids, spill containers, and penetration fittings
- Tech Tip section for unique situations encountered in the field