

## New Construction Products

### Threaded Penetration Fitting



#### Features

- Single Hole Installation
- Seals to 24" diameter sumps
- Most cost effective fitting in the industry
- Allows for non-perpendicular entries
- Available for pipe sizes 1/2" thru 4"

### Inverted Studded Penetration Fittings



#### Features

- Available 20 year warranty
- Over-Molded studs eliminate leak paths
- No metals exposed to soils
- Patented "Stress Relief Roll" for non-perpendicular entries
- Available for pipe sizes 1/2" thru 6"

Available in  
Single Sided  
Double Sided  
Filled  
Monitored

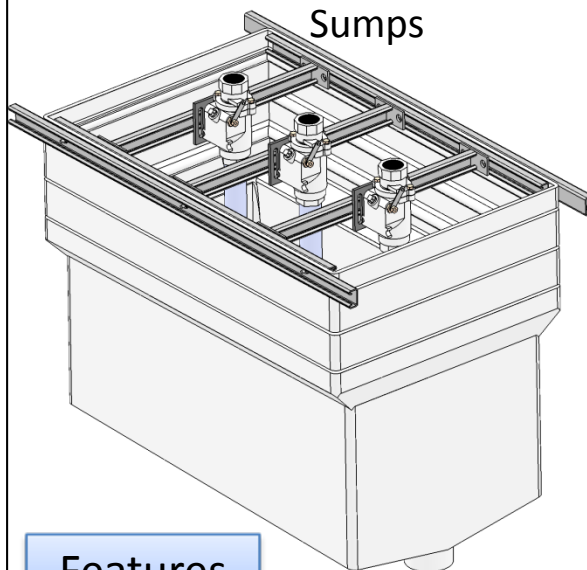
### Reducers



#### Features

- Molded in Air-Valve
- 10 psig rated when standard clamps are used
- 35 psig when High Pressure T-Bolt clamps are used
- Pipe sizes from 3/4" to 7"

### Sumps

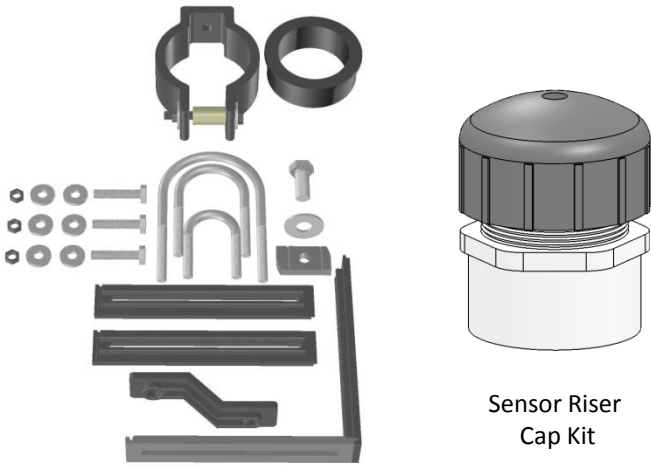


#### Features

- Sloped bottom with collection cup for fast leak detection
- Thickest Poly wall in the industry
- Available in Fiberglass
- Cut down construction for easy height adjustment
- 3 Lids fit all popular dispensers: Gilbarco, Wayne Bennett
- Most cost effective sump in the industry

## New Construction Products

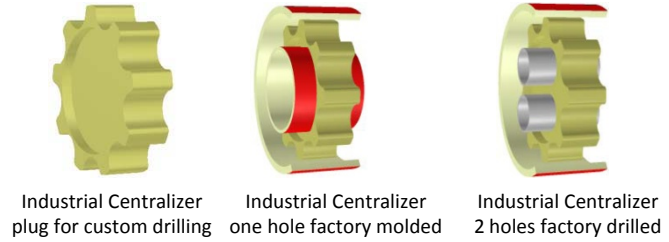
### Sensor Mounting Kits



#### Features

- Mount a sensor in the under dispenser containment
- Universal mounting for multiple applications
- Fits 1 1/2" and 2" alarm sensors
- Most cost effective in the industry

### Centralizers

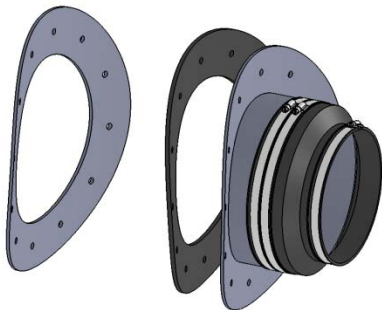


Centralizers

#### Features

- Pipe size combinations from 1/2" to 12"
- Recommended spacing 4'
- Custom sizes available

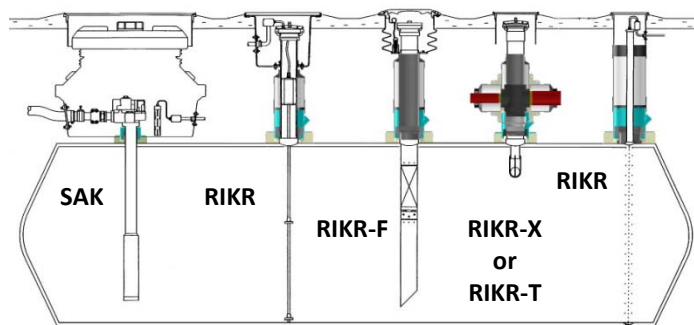
### Industrial Penetrations



#### Features

- Standard applications include 8" thru 16"
- Available for flat or custom curved
- Primary applications - waste water and drainage

### Sump Adapters & Riser Isolation Kits



#### Features

- Kit comes complete
- Designed for OPW, EBW, and other spill containers
- Sump adapter kits isolate all metal components