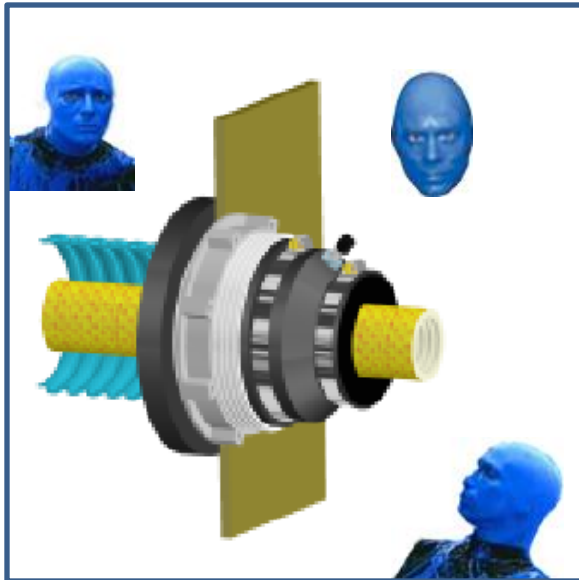


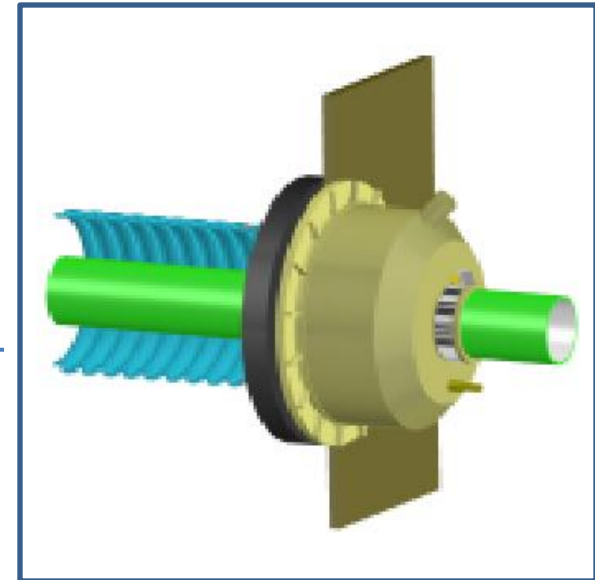
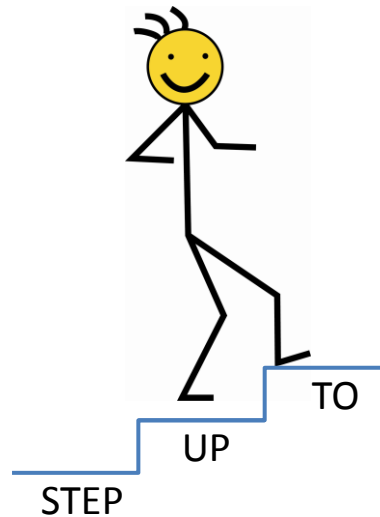
CHECK IT OUT!

Diversified's new Repair Kit for Total Containment FEB/CEB 3950

Blue about your existing
TCI installation?

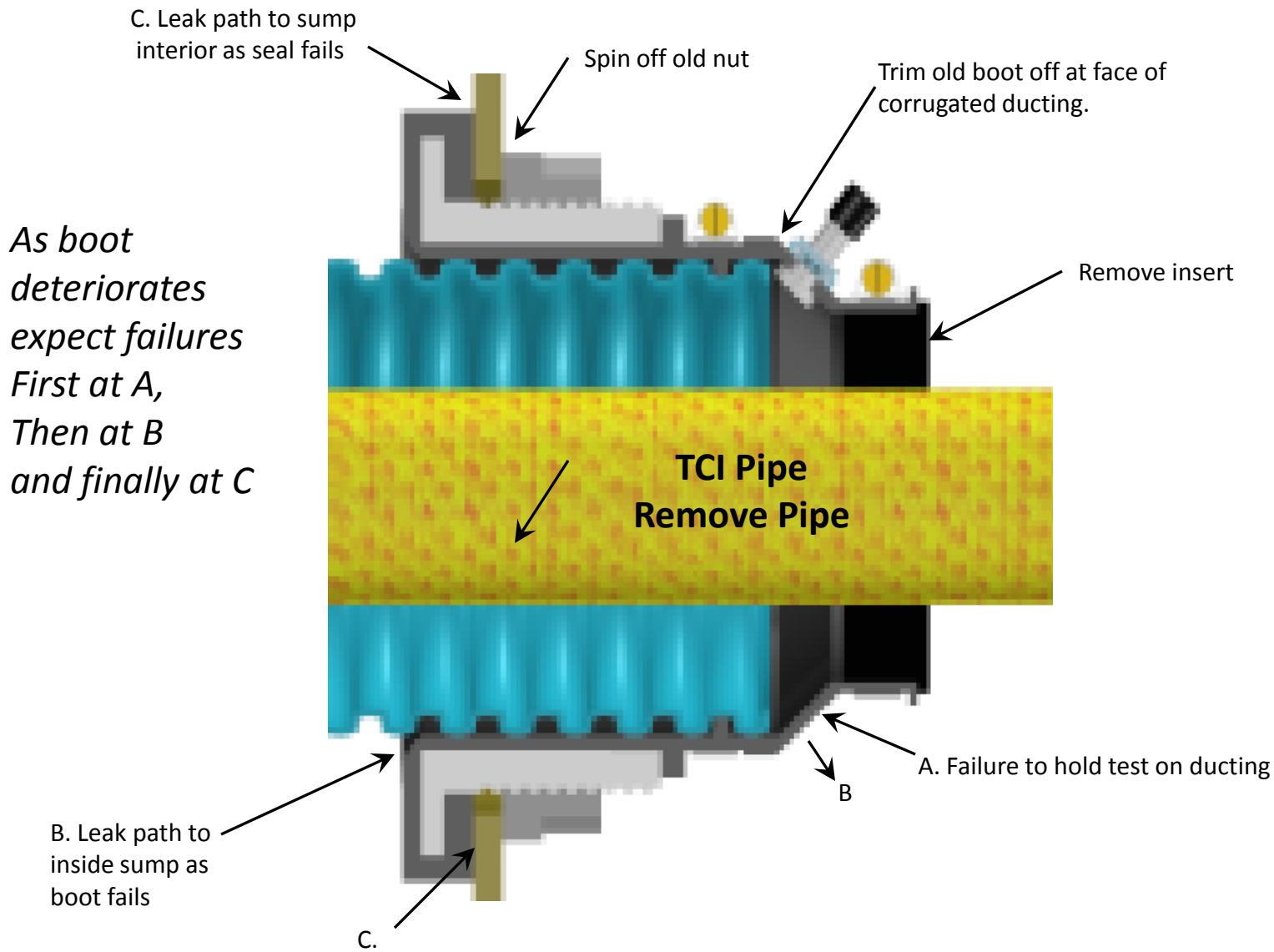


Existing TCI corrugated ducting over
new UL 971-2 Flex pipe installation

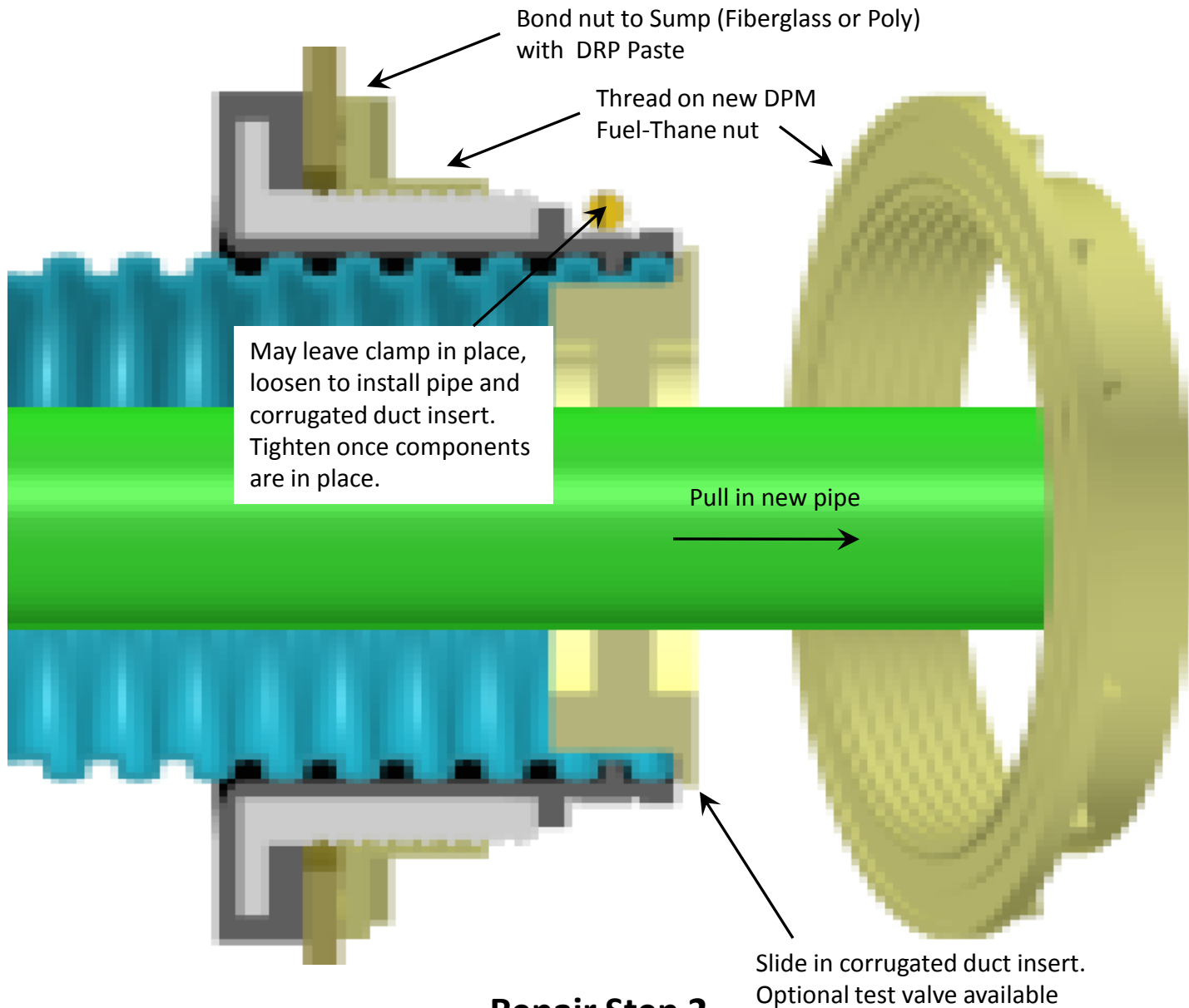


*...And More
Turn The Page to
Select the Right Product
For Your Needs*

Materials tested to 2005 Protocols of a nationally recognized testing laboratory.
Most Cost Effective Retrofit In The Market.
Easiest & Quickest Installation Further Reduces Cost.
All Flex Pipe Sizes To Choose From: APT, Environ, OPW, Western.
Fixes Failed TCI Technology.
Extended Warranties – 3 Year Materials



Typical FEB/CEB 3950 Installation



Repair Step 2

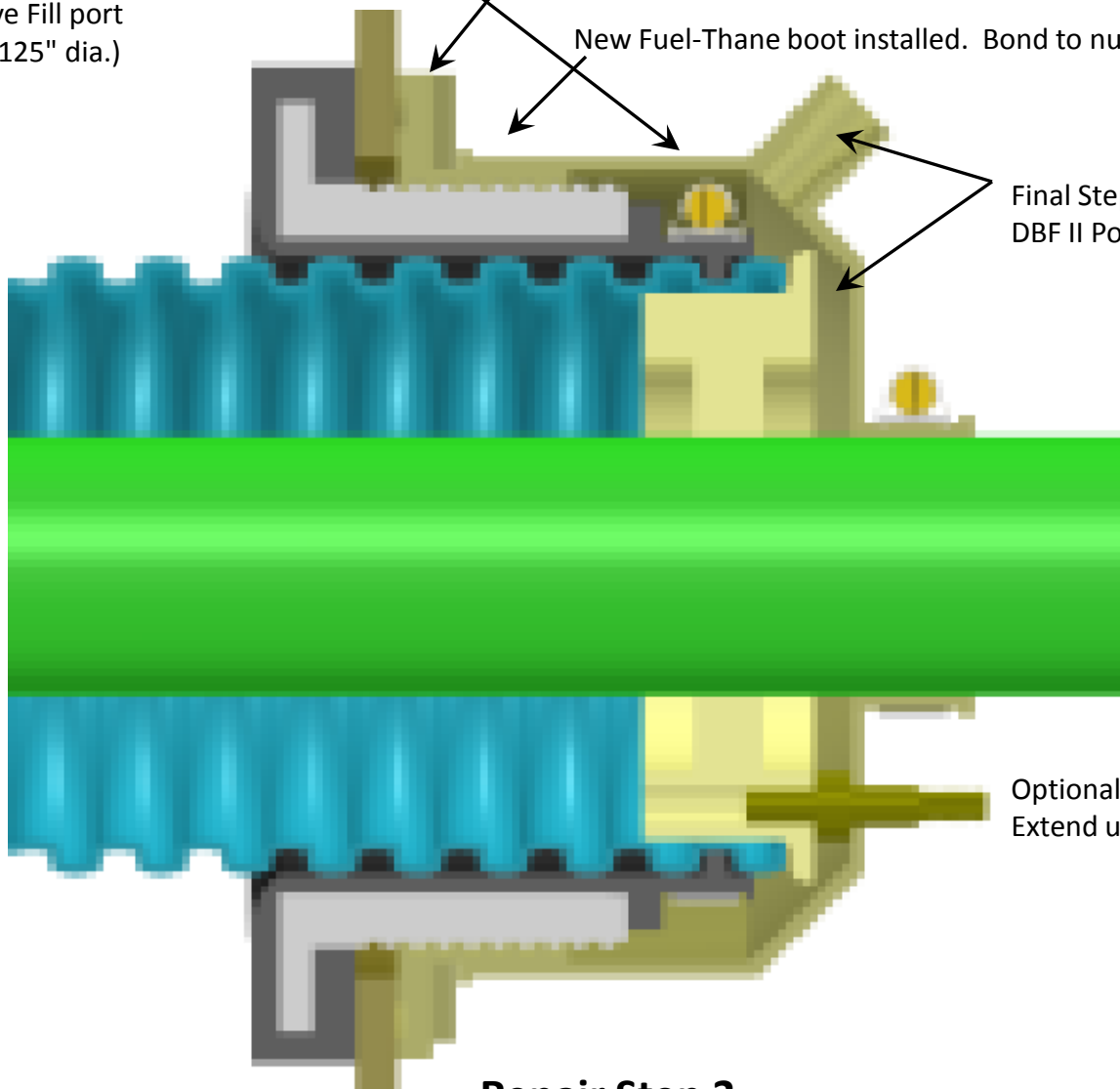
FEB/CEB Body w/DPM Nut & Insert Installed

Field drill vent port in top of boot above Fill port (approximately .125" dia.)

New Fuel-Thane nut installed

New Fuel-Thane boot installed. Bond to nut using DBB III or DGK.

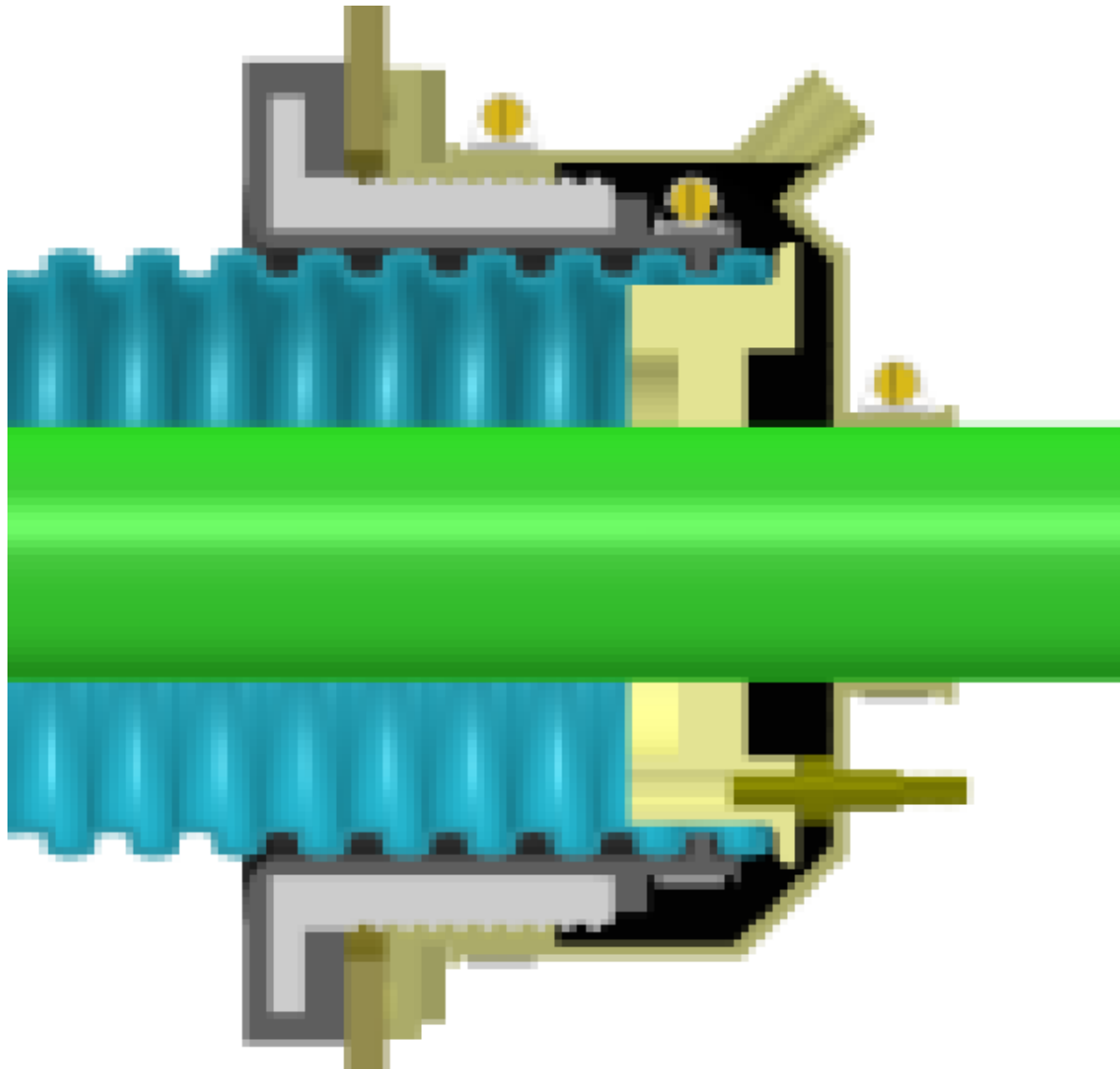
Final Step: Fill interstice with DBF II Polysulfide liquid



Optional test port extension. Extend using RFA-Tube

Repair Step 3

FEB/CEB Body w/DPM's Repair Kit Installed



FEB/CEB 3950 Repair Completed.

