



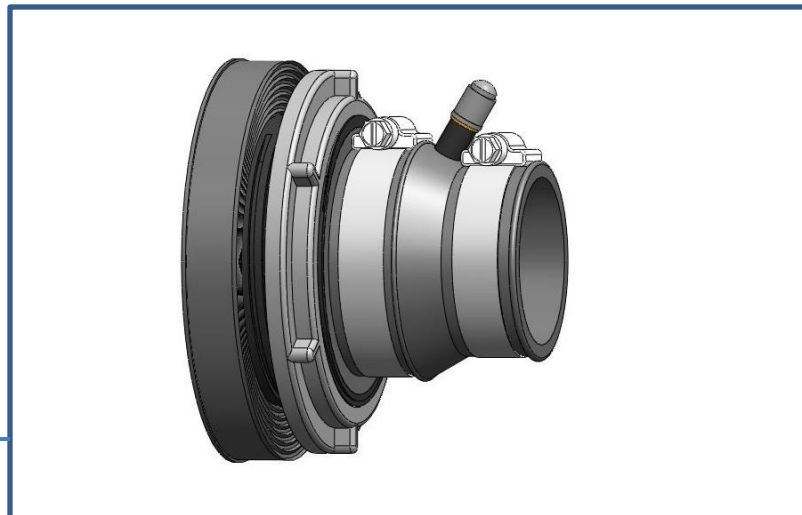
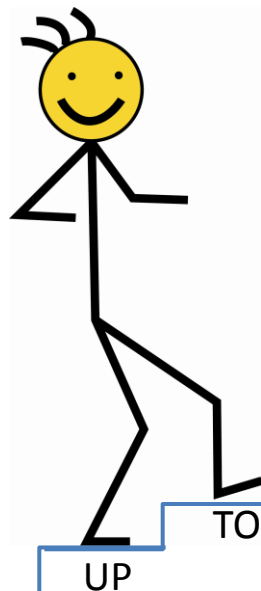
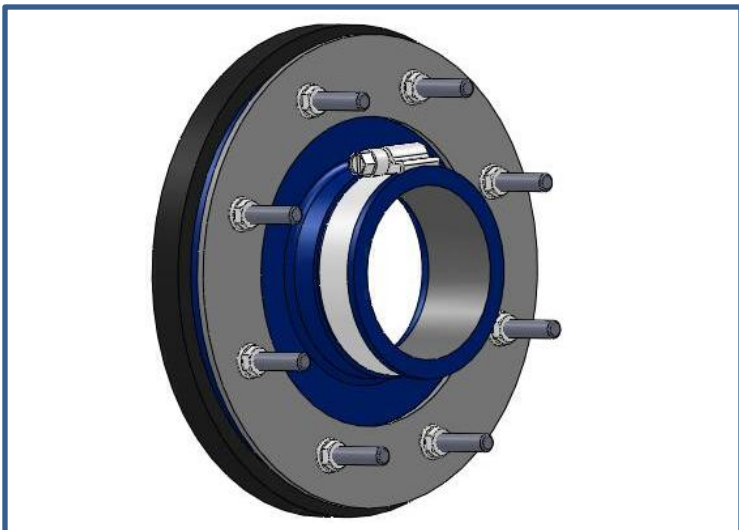
CHECK IT OUT



Diversified's *New* B2 & B3.5 Threaded Penetration Fittings

Blue about your expensive
studded penetration fittings ?

New Threaded penetration fittings suitable
for rounded or flat surfaces



STEP

...And More
Turn The Page to
Select the Right Product
For Your Needs

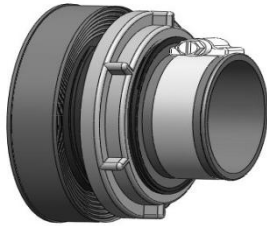
UL Listed Materials 1996 Protocol
Seals to flat or rounded surfaces to 36" Diameter
Most Cost Effective Fittings In The Market.
Easiest & Quickest Installation Further Reduces Cost.

All Pipe Sizes To Choose From:

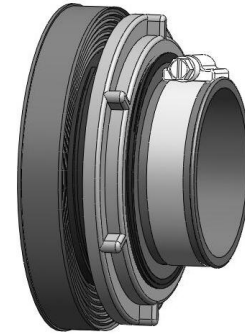
Including Ameron, Smith, Rigid Conduits, Flex Pipe & European Style Pipes
3 Year warranty on Materials and Workmanship

Threaded Penetration Fittings

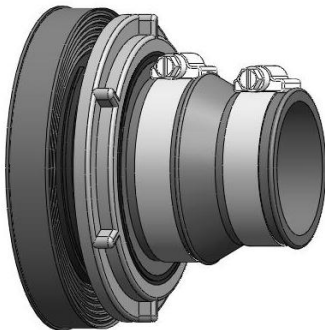
B2 Fitting



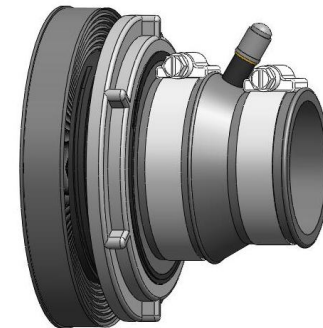
B3.5 Fitting



B3.5 Fitting
w/integral reducer

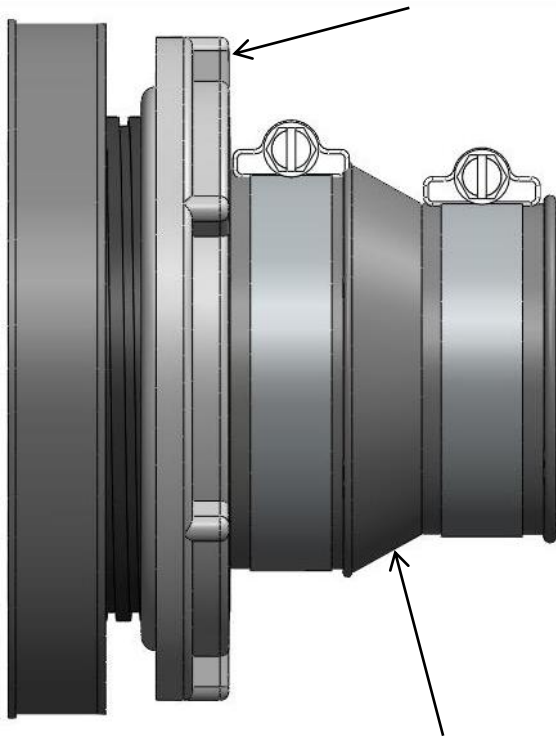


B3.5 Fitting
w/integral reducer & Air Test Valve



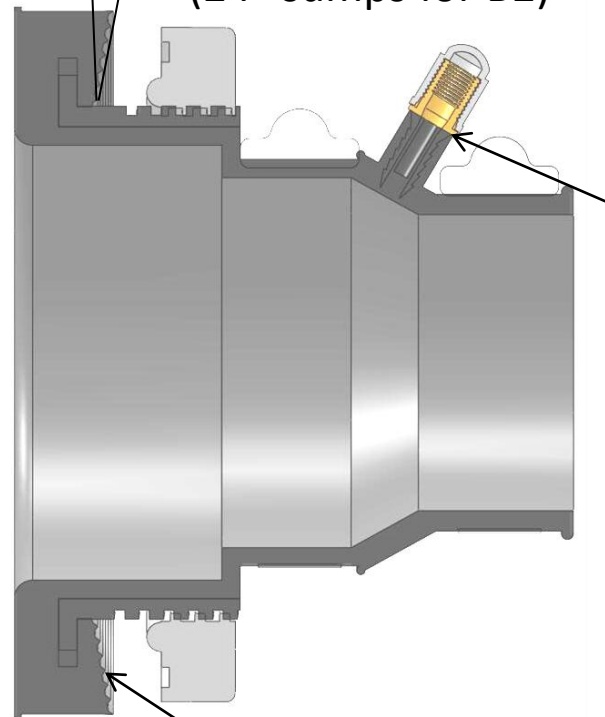
DPM's New Threaded Penetration Fitting

Acetal nut flexes to conform to Flat or Rounded surfaces



Step-down integral terminating or test reducers for all Coaxial pipe 2.7" or less

87° For sealing to 36" round sumps (24" sumps for B2)

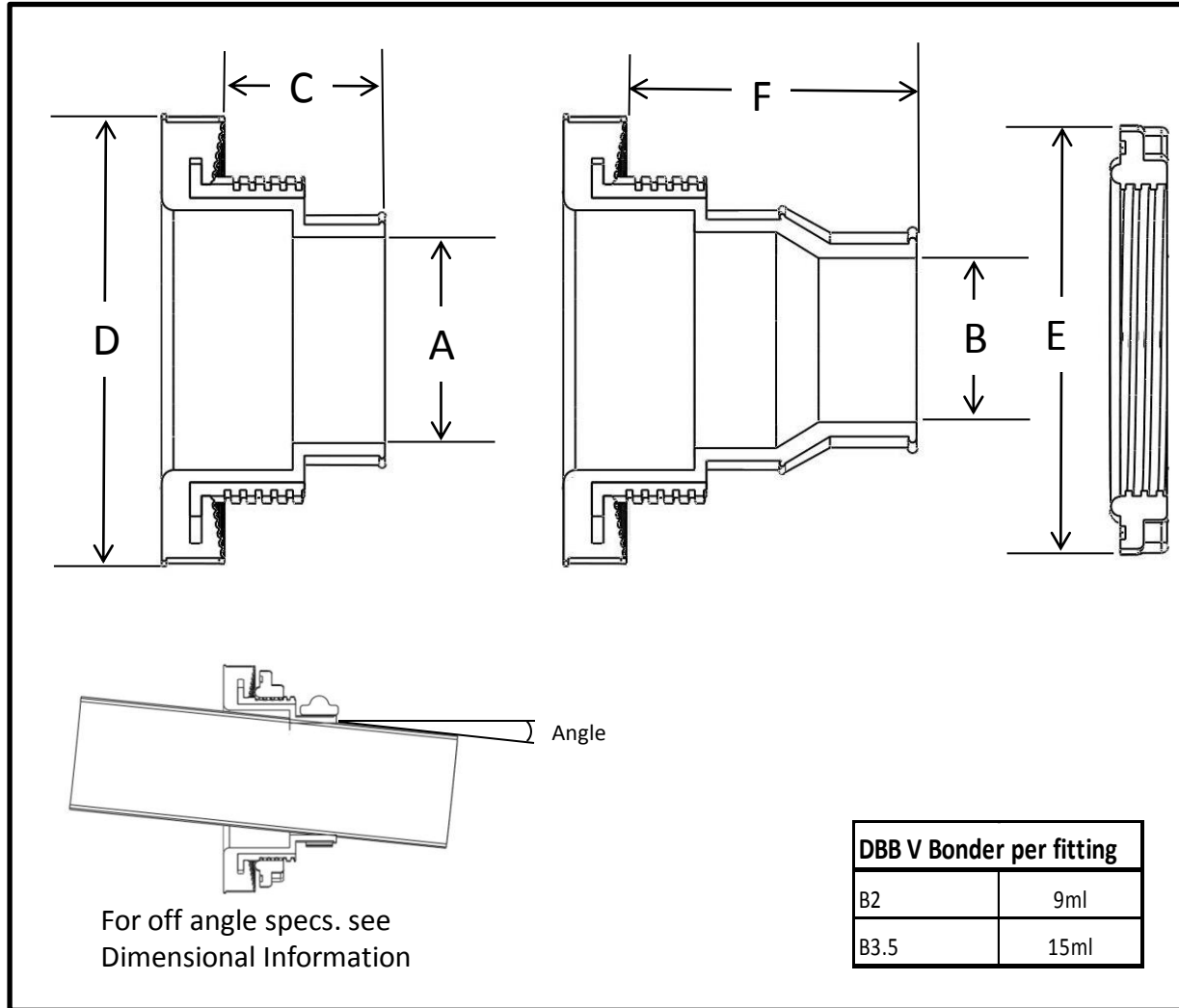


Molded in Air Test Valve (Optional)

Sealing grooves for easy distribution of Bonding agent

B2, B3.5 Penetration Fittings Dimensional Data

B2,B3.5 Dimensional Information							
Part Number	A	B	C	D	E	F	Pipe Angle
B2-1.1	1.100		1.750	3.030	2.900		11
B2-1.2	1.200		1.750	3.030	2.900		10
B2-1.3	1.300		1.750	3.030	2.900		9
B2-1.4	1.400		1.750	3.030	2.900		5
B3.5-1.5	1.500		1.700	5.000	4.500		30
B3.5-1.6	1.600		1.700	5.000	4.500		28
B3.5-1.7	1.700		1.700	5.000	4.500		22
B3.5-1.9	1.900		1.700	5.000	4.500		19
B3.5-2.0	2.000		1.700	5.000	4.500		18
B3.5-2.1	2.100		1.700	5.000	4.500		16
B3.5-2.2	2.200		1.700	5.000	4.500		15
B3.5-2.4	2.400		1.700	5.000	4.500		11
B3.5-2.5	2.500		1.700	5.000	4.500		9
B3.5-2.7	2.700		1.700	5.000	4.500		5
B3.5-40x32	1.600	1.300		5.000	4.500	TBD	TBD
B3.5-63x50	2.500	2.000		5.000	4.500	TBD	TBD
B3.5-2.7x2.4	2.700	2.400		5.000	4.500	TBD	TBD



B2

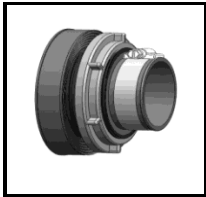


Sizes Available

Standard	Metric
B2-1.1	
B2-1.2	
B2-1.3	B2-32
B2-1.4	
B2-41	

for Pipe with OD sizes 1.0 to 1.1" Typically 3/4" Rigid Conduit
 for Pipe with OD sizes 1.1 to 1.2" Typically 3/4" PVC Coated Rigid Conduit
 for Pipe with OD sizes 1.2 to 1.3" Typically 32 mm Pipe
 for Pipe with OD sizes 1.3 to 1.4" Typically 1" or 1" PVC Coated Rigid Conduit
 for Pipe with OD sizes 1.3 to 1.4" w/ Insert Typically for 3/4" & 1" Rigid Conduits

B3.5

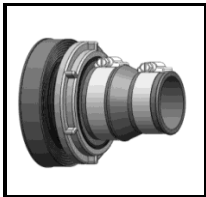


Sizes Available

Standard	Metric
B3.5-1.5	
B3.5-1.6	B3.5-40
B3.5-1.7	
B3.5-1.9	
B3.5-2.0	B3.5-50
B3.5-2.1	
B3.5-2.2	B3.5-54
B3.5-2.4	
B3.5-2.5	B3.5-63
B3.5-2.7	

for Pipe with OD sizes 1.3 to 1.5"
 for pipe with OD sizes 1.5 to 1.6" typically 40 mm pipe
 for pipe with OD sizes 1.6 to 1.7" typically 1 1/4" nominal pipe
 for pipe with OD sizes 1.7 to 1.9" typically 1 1/2" nominal pipe
 for pipe with OD sizes 1.9 to 2.0" typically 1 1/2" OPW flex Pipe & 50 mm pipe
 for pipe with OD sizes 2.0 to 2.1" typically
 for pipe with OD sizes 2.1 to 2.2" typically 54 mm pipe
 for pipe with OD sizes 2.2 to 2.4" typically 2" Fiberglass or Steel Pipe
 for pipe with OD sizes 2.4 to 2.5" typically 63 MM Pipe
 for pipe with OD sizes 2.5 to 2.7" typically ameron 2" LCX Pipe

B3.5 w/reducer

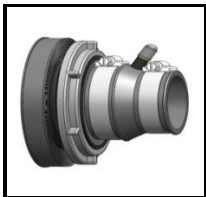


Sizes Available

Standard	Metric
B3.5- 1.6x1.3	B3.5- 40x32
B3.5- 2.5x2.0	B3.5- 63x50
B3.5-2.7x2.4	

Includes integral terminating boot
 for pipe with 40mm Secondary with 32 mm Primary
 for pipe with 63mm Secondary with 50mm Primary
 for Ameron 2" LCX pipe

B3.5 w/reducer(AIR)



Sizes Available

Standard	Metric
B3.5- 1.6x1.3A	B3.5- 40x32A
B3.5- 2.5x2.0A	B3.5- 63x50A
B3.5-2.7x2.4A	

Includes Integral Test Boot (molded in Air Valve)
 for pipe with 40mm Secondary with 32 mm Primary
 for pipe with 63mm Secondary with 50mm Primary
 for Ameron 2" LCX pipe

B2, B3.5



Weaver Products



Diversified Products Manufacturing Inc.

Installation Instructions Threaded Penetration Fittings

Prepare all surfaces to be bonded prior to completing installation steps below. **WARNING:** Failure to follow each step will void warranty & may result in premature failure of penetration fitting. Adhere to the following general instructions for each step of the installation:

BONDING TO POLY SUMPS: Clean, sand and rough up sump surfaces, then clean with DBC. Clean fitting and apply DBB V to all surfaces to be bonded.

BONDING TO FIBERGLASS SUMPS: Clean, sand all surfaces to smooth, even surface, then clean with DBC. Remove all gel coat or glazing. Apply DBB V to all surfaces to be bonded.

CLEANING: Spray all surfaces to be bonded with DBC Cleaner and allow to air dry or excess cleaner may be wiped off using a clean dry cloth.

STEP 1

Sump Preparation: Where possible run pipe so as to penetrate the sump perpendicular to sump surface. Drill hole according to chart. Sand around hole 1 1/2" on both sides of sump.

Threaded Style	Hole Saw
B2	2"
B3.5	3.5"



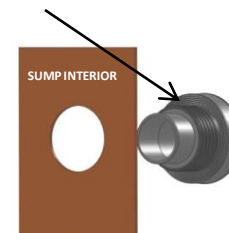
STEP 2

Sand down all uneven surfaces.

Note: Occasionally extra product exists causing inconsistent wall thickness. It is common to find this problem near seams in the sump. Sand down uneven areas until a consistent wall thickness is available for the entire sealing area of the fitting.

STEP 3

Apply DBB V bonder to the ribbed sealing surface of the fitting.



STEP 4

Install fitting body through sump wall
With the threads exposed on the inside
Of the sump.



STEP 5

Thread nut onto body

Tighten nut with water pump pliers until sealing surface is compressed to exterior sump wall

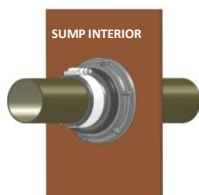


STEP 6

Install pipe through boot.

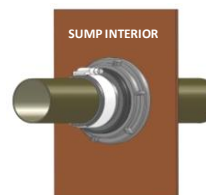
Tighten the band clamp.

Note : DO NOT EXCEED 60 in/lb
TORQUE on Band Clamp



STEP 7

Completed installation.



Tools Required

- 1) Appropriate Hole Saw
- 2) 5/16" Nut driver - (Band Clamps)
- 3) Water pump pliers

PRODUCTS NEEDED

DBC Cleaner
Bonder: DBB V B2 – 6ml , B3.5 – 20 ml

DPM's New Threaded Penetration Fitting

Guideline Specifications

Threaded Penetration Fittings for Rigid Conduit & Pipe

Penetration fittings shall be supplied where located on the drawings. All penetration fittings shall conform to the following guidelines. Penetration fittings shall be designed specifically for single wall sumps. Materials shall be fuel compatible and shall have been tested by Underwriters Laboratories for the intended application.

Penetration fittings shall be of the Threaded design.

Fittings shall seal to flat or curved surfaces, (B3.5 - 36" diameter), (B2 - 24" diameter).

Fittings shall not shear under stress. Penetration fittings shall allow for 360 degrees of movement associated with incidental ground movement without damaging either the fitting or pipe or sump walls.

Installation of the penetrating fitting shall be performed by factory licensed and trained technicians. Licenses of installing personnel shall be current to the manufacturers recommendations.

Sealing surfaces shall be designed to distribute Bonding Agent evenly throughout the sealing surface.

Threaded Penetration Fittings shall be installed using factory tested Methyl Methacrylate bonder.

The Methyl Methacrylate shall bond the sealing surface of the penetration fitting to the fiberglass substrate.

The manufacture of the penetration fittings shall offer onsite supervision and training. The manufacture shall offer a 3 year parts warranty on all fittings supplied by the manufacturer for this purpose.

Fittings shall be the "B Series" manufactured by Diversified Products Manufacturing Inc. phone: 530-534-3966



Diversified Products Manufacturing Inc.



Warranty Statement

I. 20 YEAR LABOR AND MATERIALS WARRANTY ON CERTAIN PRODUCTS

- A. Warranty.** Diversified Products Manufacturing Inc. ("DPM") warrants that its Filled and Monitored series fittings will be free from defect for a period of 20 years and 6 months from the date of manufacture. A defect is a flaw in material or workmanship that allows fluid to pass from the interior of a containment chamber (UDC or tank sump) to the exterior of the containment chamber, or from exterior to the interior, through the penetration fitting.
- B. Conditions Precedent.** This warranty applies only if the following conditions have been satisfied: (1) The fitting was installed by a factory trained installer following DPM's written installation procedures; (2) Fittings were installed using DPM approved bonder, fill products and other supplies; (3) The installation site was registered with DPM and a fee of \$5.00 per fitting paid to DPM within 60 days after substantial completion; (4) The containment chambers in which the fittings are installed are made of fiberglass; (5) The containment chamber and pipe in which the fitting was installed were sound; (6) A 24 hour Hydro-static test was successfully passed; (7) Purchaser has provided DPM with the notification of claim described below.
- C. Remedies.** DPM Inc., will at its expense and in full satisfaction of its warranty obligations, either repair or replace, labor and materials, any fitting found to be defective within 20 years and 6 months from the date of manufacture. Most DPM penetration fittings have a month and year stamp indicating the month of manufacture on the front plate (that part of the fitting located inside the sump). Any fitting without a month and year date stamp shall be deemed to have been manufactured in January 2006. A warranty repair shall be deemed complete once the containment chamber can be filled with water without a loss of fluid in a 6 hour period.

II. 3 YEAR MATERIALS WARRANTY ON ALL PRODUCTS

- A. Warranty.** In addition to the above warranty, DPM warrants that all products manufactured and distributed by DPM, including all Penetration Fittings, Terminating and Test Reducers, Inserts, Isolation Products, Split Repair Products, Industrial Products, Bonders and Adhesives, to be free from defects in materials and workmanship for a period of 3 years from the date of purchase.
- B. Conditions Precedent.** This warranty does not apply to products which are not installed by a factory- trained installer following DPM's written installation instructions.
- C. Remedies.** If DPM determines any product to be defective it will, at its election, either repair or replace the items, materials only, to the original purchaser or refund the purchase price to the original purchaser.

III. NOTIFICATION OF CLAIM

A claimant shall notify DPM within 14 days of becoming aware of a defect. Claim notifications must include the site name, address and details of the defect. Additionally the claimant shall provide the name of the installing contractor and evidence that the installer was trained by DPM in the installation of DPM's products.

IV. LIMITATION OF WARRANTY

The above warranties shall not apply to defects resulting from: misuse, unauthorized modification, operation or storage outside the environmental specifications for this product, in-transit damage, improper maintenance, use of accessories, supplies, consumables, or other items not approved by DPM for use with this product. DPM makes no other express warranty, whether written or oral, with respect to this product. Any implied warranty of merchantability or fitness for a particular purpose is limited to the duration of the express warranty set forth above. The remedies provided above are the sole and exclusive remedies. In no event shall DPM be liable for any other direct, indirect, special, incidental or consequential damages, whether based on warranty, contract, tort, or any other legal theory. DPM is not responsible for contamination to the soils or other damages other than the repair of the fitting. Excavation, disposal of soils and other consequential damages that may be associated with a failed penetration fitting are not covered under this warranty. Damage from fire, structural failure, war, earthquake and other force majeure events are not covered by this warranty.

B 3.5 Pressure Testing Results

Diversified has tested the B 3.5 penetration fitting on a 36" diameter curved surface.

The top of our test fixture is shown with pressure being applied first to the exterior of the sump/fitting.

The second test was performed to represent pressures being applied from inside the sump.

1 PSI pressure is generated by every 2.31 ft of standing water. We tested the B 3.5 at 30 PSI which would represent 69.3 ft of head. To encounter this type of pressure the fitting would need to be at the bottom of a missile silo. The depth of under dispenser containment is generally limited to less than 3 feet.

The maximum standing pressure expected from either the inside or outside a the sump would be less than 1.3PSIG. The results of our testing program is shown below each size of penetration tested.

B 3.5 External Pressure Test



B 3.5 Internal Pressure Test



Pressure applied to the sump exterior.

Surface Shape	36" Diameter	External Pressure
Pressure	Result	
5 PSIG	No Leaks	
10PSIG	No Leaks	
15 PSIG	No Leaks	
20 PSIG	No Leaks	
25 PSIG	No Leaks	
30 PSIG	No Leaks	Test Terminated
No leaks at pressures equivalent to 69.3 feet of Standing Water.		

Pressure applied to the sump interior.

Surface Shape	36" Diameter	Internal Pressure
Pressure	Result	
5 PSIG	No Leaks	
10PSIG	No Leaks	
15 PSIG	No Leaks	
20 PSIG		Test Terminated
No leaks at pressures equivalent to 34.65 feet of standing Water.		

Diversified Products Manufacturing Inc.

Oroville, California, USA

www.dpm-llc.com

1-530-534-3966

B2 Pressure Testing Results

Diversified has tested the B2 penetration fitting on a 24" diameter curved surface.

The top of our test fixture is shown with pressure being applied first to the exterior of the sump/fitting.

The second test was performed to represent pressures being applied from inside the sump.

1 PSI pressure is generated by every 2.31 ft of standing water. We tested the B2 at 30 PSI which would represent 69.3 ft of head. To encounter this type of pressure the fitting would need to be at the bottom of a missile silo. The depth of under dispenser containment is generally limited to less than 3 feet.

The maximum standing pressure expected from either the inside or outside a the sump would be less than 1.3PSIG. The results of our testing program is shown below each size of penetration tested.

B2 External Pressure Test



B2 Internal Pressure Test



Pressure applied to the sump exterior.

Surface Shape	24" Diameter	External Pressure
Pressure	Result	
5 PSIG	No Leaks	
10PSIG	No Leaks	
15 PSIG	No Leaks	
20 PSIG	No Leaks	
25 PSIG	No Leaks	
30 PSIG	No Leaks	Test Terminated

No leaks at pressures equivalent to 69.3 feet of Standing Water.

Pressure applied to the sump interior.

Surface Shape	24" Diameter	Internal Pressure
Pressure	Result	
5 PSIG	No Leaks	
10PSIG	No Leaks	Fitting distorted
15 PSIG	Minor leak	More Distortion
20 PSIG		Test Terminated

No leaks at pressures equivalent to 23.1 feet of standing Water

Diversified Products Manufacturing Inc.

Oroville, California, USA

www.dpm-llc.com

1-530-534-3966