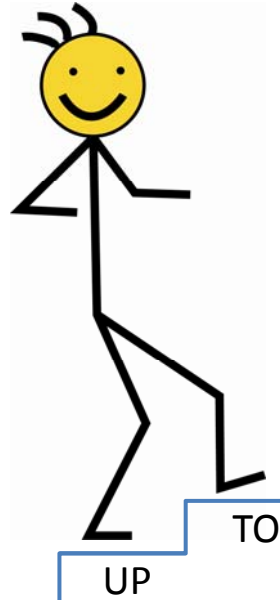


CHECK IT OUT

Diversified's *New* family of Reducers

RA 3.5 x 2.4A



New Style RA 3.5 x 2.4HPA



All pipe sizes supported from $\frac{3}{4}$ " to 7" & Industrial sizes to 16"
10 psig rated if used with standard worm gear clamps
35 psig rated if used with High Pressure style T-Bolt clamps
Molded in Air Valves
3 year warranty on materials

Reducers: Fit the Pipe & Application

- Styles of Double Wall Pipe
 - Rigid Styles
 - FRP
 - PVC
 - Steel
 - Flex Styles
 - European Styles
- Custom Reducers for Custom Applications

Reducer Features

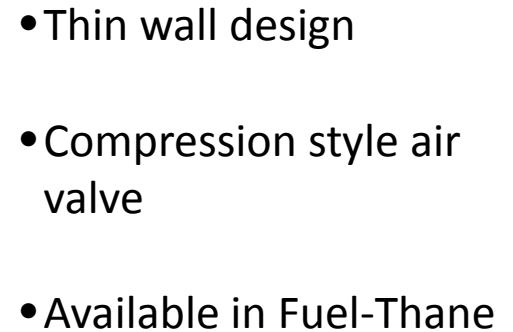
New Style Features

- Thicker wall thickness
- Molded in Brass air valve
- Consistent height across the family
- Same reducer for HP & Standard applications
- HP uses T-Bolt clamps
- Available in Fuel-Thane



Old Style Features

- Thin wall design
- Compression style air valve
- Available in Fuel-Thane



Rigid Pipe Reducers – Dimension Data

Terminating and Test Reducers for FRP and other Double Wall Rigid Pipe

Dimensional Information -- Alcryn & Fuel Thane Reducers

Part No.	A	B	C
RA 1.4x1.4 *	1.390	1.390	2.400
RA 2.4x1.1 *	2.446	1.200	1.800
RA 2.4x1.4 *	2.446	1.390	1.800
RA 2.4x2.0 *	2.446	2.050	1.930

Part No.	A	B	C
RA 5.6x3.5	5.613	3.600	n/a
RA 6.7x3.5	3.600	3.600	n/a
RA 6.7x4.5	4.550	4.550	n/a
RA 6.7x5.0	6.675	4.950	n/a
RA 6.7x6.7	6.675	6.675	n/a

* These sizes are manufactured with a different dimensional design from what shown below. Contact the factory if this information is needed.

RA 2.7x2.4	2.725	2.450	2.950
------------	-------	-------	-------

RA 3.5x1.1	3.600	1.200	2.000
RA 3.5x1.4	3.600	1.390	2.000
RA 3.5x1.8	3.600	1.862	2.000
RA 3.5x2.4	3.600	2.425	2.000
RA 3.5x2.5	3.600	2.575	2.000
RA 3.5x3.0	3.600	3.000	2.000

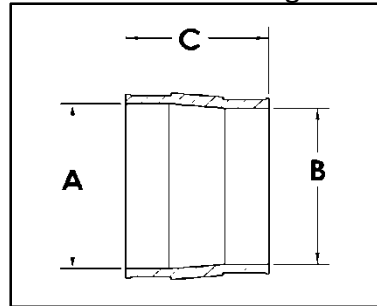
RA 3.8x2.4	3.77	2.4	2.97
RA 3.8x3.5	3.77	3.54	2.97

RA 3.9x1.4	3.950	1.390	2.300
RA 3.9x1.8	3.950	1.862	2.300
RA 3.9x2.4	3.950	2.425	2.300
RA 3.9x3.0	3.950	3.030	2.300
RA 3.9x3.9	3.950	3.950	2.300

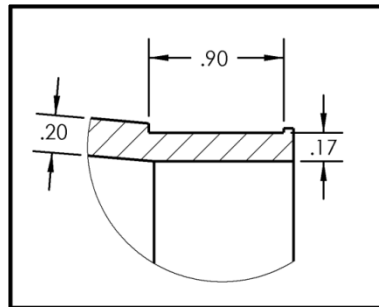
RA 4.5x1.1	4.550	1.200	2.800
RA 4.5x1.9	4.550	1.950	2.800
RA 4.5x2.0	4.550	2.073	2.800
RA 4.5x2.4	4.550	2.425	2.800
RA 4.5x3.5	4.550	3.400	2.800

RA 4.8x4.5	4.780	4.500	3.000
------------	-------	-------	-------

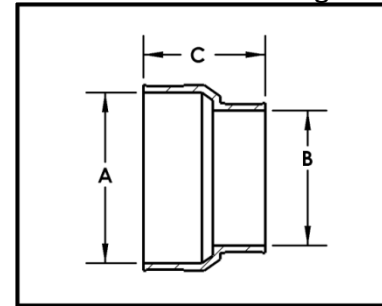
Coaxial Reducer Design



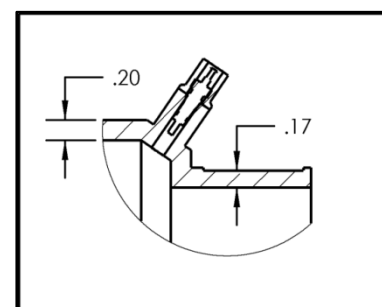
Sidewall Detail



Standard Reducer Design



Molded-in Air Valve Detail



Custom Reducer Styles

Terminating and Test Reducers for FRP and other Double Wall Rigid Pipe
Dimensional Information -- Alcryn & Fuel Thane "Custom" Reducers

Part No.	A	B	C	D
----------	---	---	---	---

Eccentric Reducers

RA 3.5x2.4E	3.600	2.420	2.000
RA 3.5x3.0E	3.600	3.030	2.000
RA 4.5x3.5E	4.550	3.510	2.800
RA 6.7x4.5E	6.750	4.520	4.000

Multiple Outlet Reducers

RA 4.5x1.4x1.4	4.550	1.390	3.000	1.390
RA 4.9x1.9x1.4	4.900	1.950	3.000	1.390

Reducers with Drain Ports

RA 2.0x1.8D	2.030	1.830	2.810
RA 2.5x2.3D	2.550	2.310	2.825
RA 3.5x2.4D	3.600	2.450	2.000

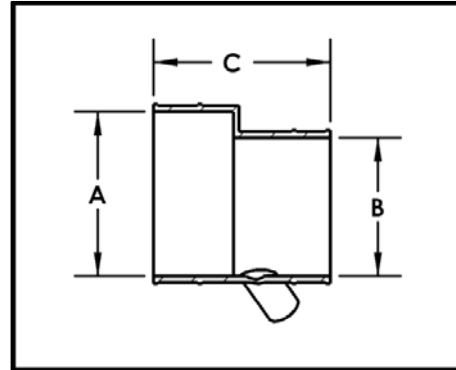
Long Reducers

RA 3.9x2.4L	3.950	2.420	5.400
RA 3.9x3.9L	3.950	3.950	2.950

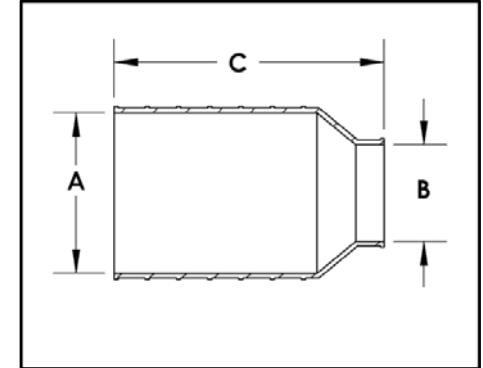
Custom Reducers

RA 1.8x1.4BVO	1.862	1.390	2.100
---------------	-------	-------	-------

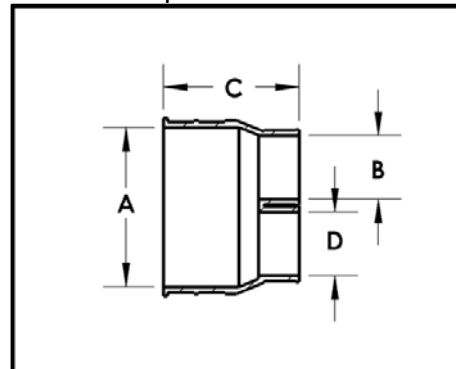
Eccentric Reducer Design



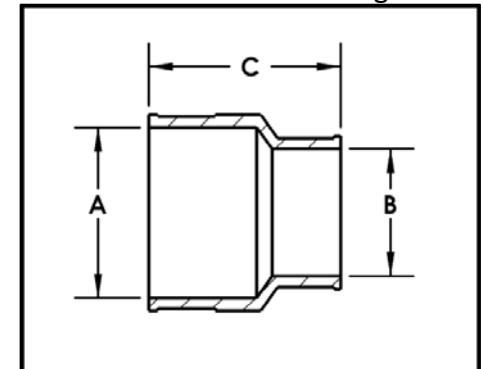
Long Reducer Design



Multiple Outlet Reducer



Custom Reducer Design



Flex Pipe Reducer Styles

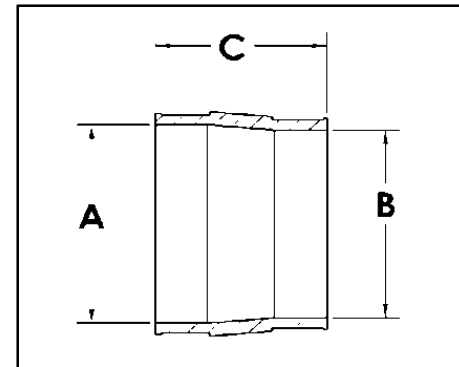
Terminating and Test Reducers for Flex Pipe

Dimensional Information -- Alcryn & Fuel Thane Reducers

Flex Pipe Reducers

Part No.	A	B	C
RA 1.2x1.0	1.198	1.050	
RA 1.5x1.3	1.470	1.270	
RA 1.9x1.7	1.950	1.725	
RA 2.0x1.8	2.070	1.830	2.810
RA 2.2x2.0	2.190	2.070	
RA 2.5x2.3	2.550	2.383	2.900
RA 2.7x2.5	2.725	2.550	3.000
RA 3.5x3.3	3.600	3.300	

Flex Pipe Reducer Design



European Pipe Reducer Styles

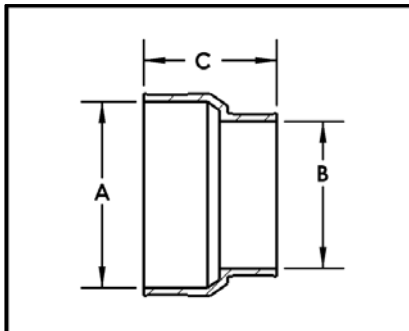
Dimensional Information -- Alcryn & Fuel Thane Reducers

Part No.	A	B	C
RA 7.1x5.6	7.150	5.510	
RA 7.1x4.4	7.150	4.510	
RA 7.1x3.6	7.150	3.570	
RA 6.3x4.4	6.390	4.570	4.050
RA 6.3x3.5	6.390	3.570	4.050
RA 5.0x4.4	4.970	4.570	2.865
RA 4.4x3.5	4.570	3.570	2.865
RA 4.4x2.5	4.570	2.550	2.865
RA 4.4x2.0	4.570	2.050	2.865
RA 3.5x3.0	3.590	3.000	2.0
RA 3.5x2.0	3.590	2.070	1.890
RA 3.0x2.5	3.100	2.550	1.950
RA 2.5x2.0	2.550	2.050	1.950
RA 1.6x1.3	1.625	1.270	2.000

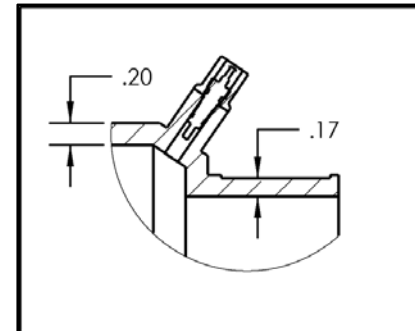
Metric Reference Chart

MM	Nom	Actual OD	DPM ID
200	8"	7.87"	7.9
180	7"	7.09"	7.1
160	6"	6.30"	6.3
140	5"	5.51"	5.6
125	4.5"	4.92"	5.0
110	4"	4.33"	4.4
90	3"	3.54"	3.6
75	2.5"	2.95"	3.0
63	2"	2.48"	2.5
50	1.5"	1.97"	2.0
40	1.25"	1.57"	1.6
32	1"	1.26"	1.3
25	.75"	0.98"	1.0
19	.50"	0.75"	0.8

Current Reducer Design



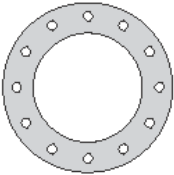
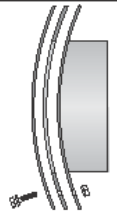
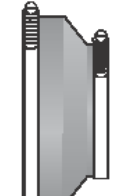
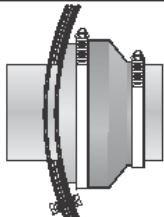
Molded in air valve detail



Industrial Reducer Styles

Leadership in Innovative Products & Manufacturing Technologies
Diversified Products Manufacturing Inc.

Application Bulletin - Industrial Bulkheads

1. FLANGE	2. SLEEVE	3. TERMINATION REDUCER	ASSEMBLY FOR 8" PIPE
			


TECHNICAL DATA											
NOMINAL PIPE SIZE	PRODUCT NUMBER	1. FLANGE (STEEL)		2. SLEEVE			3. TERM. SEC. PRI. HOLE				
		# BOLTS	THICK	WIDTH	DIA.	"L"	MAT'L	RED.	I.D.	I.D.	
8	B11-8F	12	3/16"	3"	10.76"	4"	Steel	10x8	10.6	8.5	11"
8	B11-8C	12	3/16"	3"	10.76"	4"	Steel	10x8	10.6	8.5	11"
10	B13-10F	12	3/16"	3"	12.75"	4"	Steel	12x10	12.6	10.6	13"
10	B13-10C	12	3/16"	3"	12.75"	4"	Steel	12x10	12.6	10.6	13"
12	B15-12F	12	3/16"	3"	14.0"	4"	Steel	15x12	14.4	13.2	15"
12	B15-12C	12	3/16"	3"	14.0"	4"	Steel	15x12	14.4	13.2	15"

F= Flat C= Curved

FEATURES AND BENEFITS	
•	Diversified custom manufactures bulkheads for large diameter pipes.
•	Standard applications include 8" and larger pipes
•	Gasket material variable for application
•	Quick delivery, usually less than two weeks
•	Available for standard (36", 42", 48") and custom sump diameters
•	Primary applications - waste water and drainage
•	Stainless Steel bolts, washers, & nuts
•	The mechanical seal of Diversified Custom bulkheads is superior to field fabrications

Leadership in Innovative Products & Manufacturing Technologies
Diversified Products Manufacturing Inc.

Application Bulletin - Industrial Terminating & Test Reducers



TECHNICAL DATA	
Product Nbr	Industrial Terminating & Test Reducers
Alcryn R_6x3	Pellethane RL_6x3
R__6x3	8" terminating to 3"
R__6x4	8" terminating to 4"
R__8x4	8" terminating to 4"
R__8x6	8" terminating to 6"
R__10x6	10" terminating to 6"
R__10x8	10" terminating to 8"
R__12x6	12" terminating to 6"
R__12x8	12" terminating to 8"
R__12x10	12" terminating to 10"
R__16x10	16" terminating to 10"
R__16x12	16" terminating to 12"

Air valves may be installed in either the Alcryn or Pellethane Terminating Reducers. Specify -A to have the air valve factory installed.
R__XXxXX-A Air valve adder