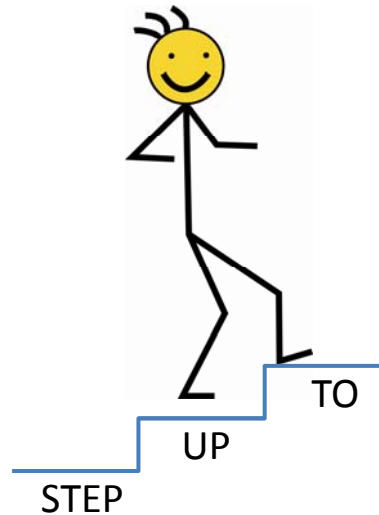


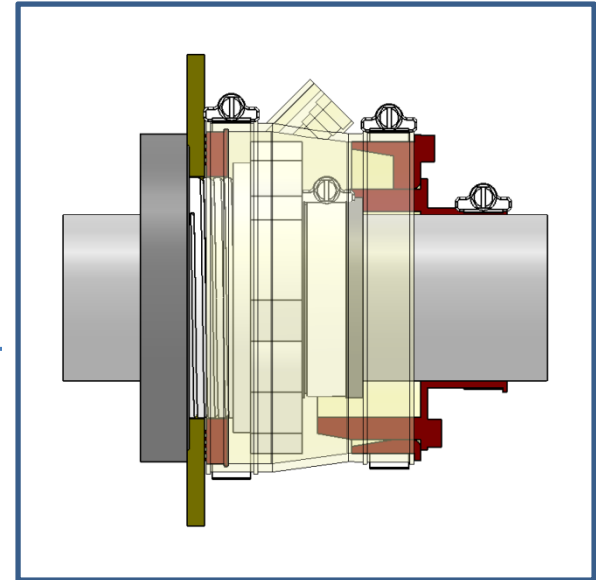
# CHECK IT OUT!

## Diversified's new MULTI-SYNC Repair Kit

Problems with leaking,  
hard to get at,  
conduit entry fittings?



DPM's Multi-Sync Repair Kit  
is the Best Solution

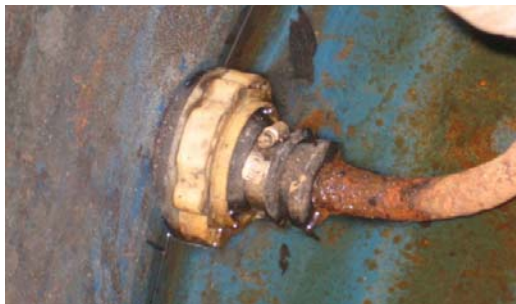


*...And More  
Turn The Page to  
Select the Right Product  
For Your Needs*

Materials tested to 2005 Protocols of a nationally recognized testing laboratory.  
Most Cost Effective Retrofit In The Market.  
Easiest & Quickest Installation Further Reduces Cost.  
Repairs ALL Pipe Sizes from any manufacturer up to 6" Nominal.  
Fixes Off Angle or Off Centered Piping Problems.  
Extended Warranties – 3 Year Materials

# The Multi-Sync Repair

Have you seen these fittings before???



TCI CB 2030



TCI UB 2000



TCI UB 0075

TCI FB 3950



TCI CFB 2000

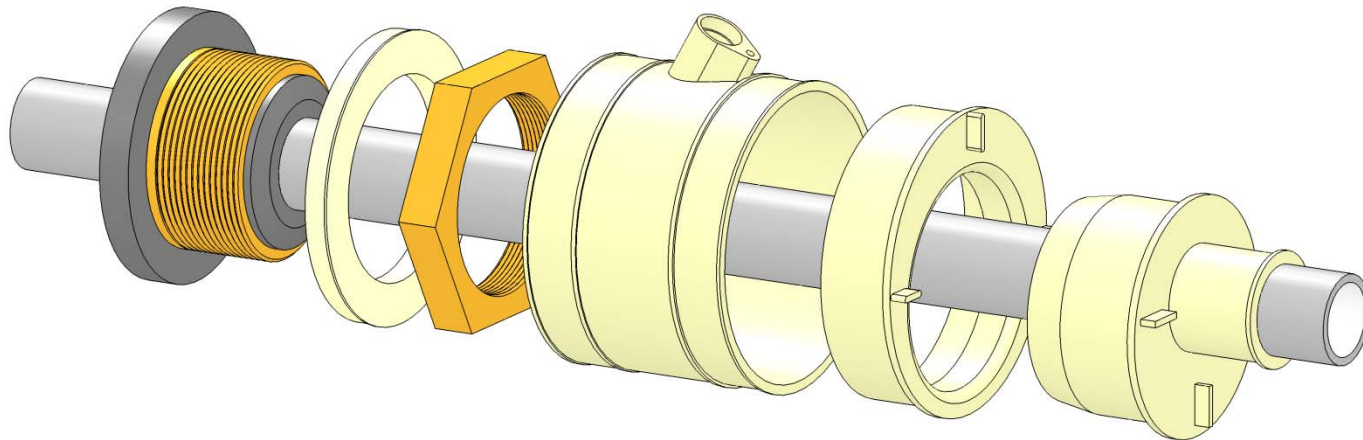
# Common Repair Issues

- No Clearance around the entry fitting
- Pipes not centered
- Pipes coming thru at ODD or EXCESSIVE Angles
- Pipes with bends very close to the end of the entry fitting

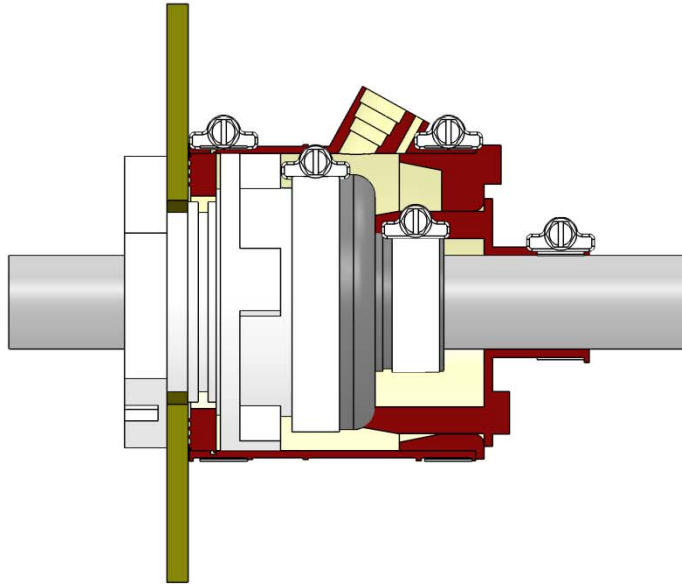


# Multi-Sync Repair Benefits

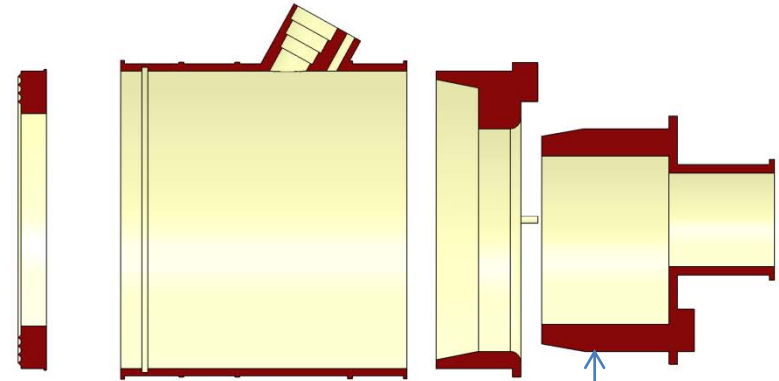
- Solves ALL Problems with Clearance around the entry fitting
  - ✓ The Multi-Sync has the same “foot-print” as the old fitting
- Solves ALL Issues with Pipes not centered
- Solves ALL Issues with Pipes coming thru at ODD or EXCESSIVE Angles
  - ✓ The Multi-Sync Inserts rotate to fit the position of the pipe
- Solves ALL Issues with Pipes with bends very close to the end of the entry fitting
  - ✓ The Multi-Sync Repair extends less that 3” from sump wall
- Solves ALL Issues with adding extra holes in the sump
  - ✓ **The Multi-Sync Repair Kit “DOES NOT USE Tek Screws”**
  - ✓ No New HOLES or LEAK PATHS introduced to the sump



# The Multi-Sync Fix



The Assembled Part



The "Bonding Ring"

The "Sleeve" with Fill & Vent Ports

The "Eccentric Insert"

The "Multi-Sync Reducer"

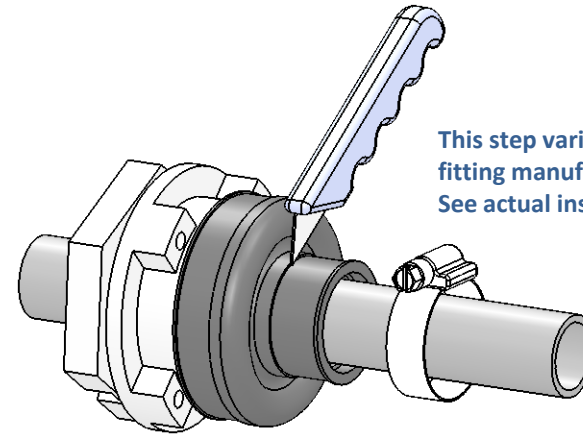
# How the Multi-Sync Works

The Basic Steps to fixing a “Threaded” entry fitting

## Part 1 – The Bonding Ring & Sleeve

### Step 1: Clean around part to be repaired

- Clean around the old part
- Cut off the reducer part of the old entry fitting
- Back off the nut
- Clean & Sand the sump wall & Clean the repair parts with DBC cleaner. Wipe dry.



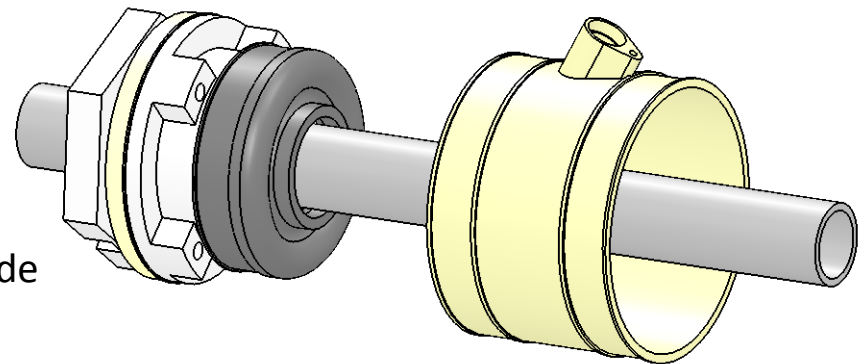
This step varies depending on the fitting manufacturer.  
See actual installation instructions.

### Step 2: Check the fit of the repair parts

- Check the fit of the “Bonding Ring” and “Sleeve” around the nut & pipe

### Step 3: Bond Split Parts Back Together

- Back off the nut & “Bond” the split parts back together
- Let cure for 30 minutes
- Apply “Sealer” to sump side of Bonding Ring, slide up to sump wall, & thread on Nut
- Do Not Over Tighten. Snug is ok
- Attach the Sleeve, with fill port up. Bond with DBB III. Set Clamp in place



# How the Multi-Sync Works

## The Basic Steps to fixing a “Threaded” entry fitting

### Part 2 – The Eccentric Insert & Multi-Sync Reducer

#### Step 4: Install & Bond Eccentric Insert & Multi-Sync Reducer Back Together

- Wrack Eccentric Insert around the pipe
- Wrack Multi-Sync Reducer around the pipe
- Apply DBB III to split area on Eccentric Insert, press ends together & clamp
- Apply DBB III to split area on Multi-Sync Reducer, press ends together & clamp

#### Step 5: Install The Eccentric Insert & Multi-Sync Reducer

- Dry fit the Eccentric insert. Make sure it fits properly over the pipe & inside the sleeve.
- Dry fit the Multi-Sync Reducer
- Adjust the positions so that they lineup properly with the Repair Sleeve & Pipe.

**Note: A proper fit will not cause extra pressure or force to the sleeve and will allow a longer lasting repair.**

- Once you have the part lined up correctly
  1. Pull back the Multi-Sync Reducer & Eccentric Insert
  2. Apply DBB III bonder all around the Eccentric Insert,
  3. Slide Eccentric into the Repair sleeve in the proper position
  4. Apply DBB III bonder all around the Multi-Sync Reducer
  5. Slide the Multi-Sync Reducer into it's proper place
  6. Set the Clamp the around the sleeve & over the Eccentric Insert and tighten “snugly”.
  7. Set clamp over reducer end on the pipe & tighten enough to create a seal around the pipe.

#### Step 6: Fill the part with DBF II Polysulfide

- Slowly fill the repair with DBF II
- Use the “Remote Fill” option if space is limited around the repair
- Cleanup & you are done
- Can be Hydro-static tested after 1 hour

Split Eccentric Insert



Split Multi-Sync Reducer

