



Weaver
Products
Catalog

Leadership in Innovative Products & Manufacturing Technologies

Diversified Products Mfg LLC

5523 Baggett Marysville Road.
Oroville, CA 95965

PHONE: 530-534-3966 • FAX: 530-533-3361



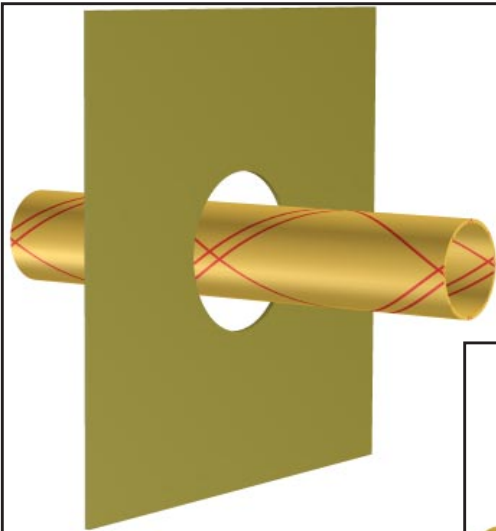
Split
Repair
Products

Uniseals & PERMA-LOCK (CTC) Applications Manual

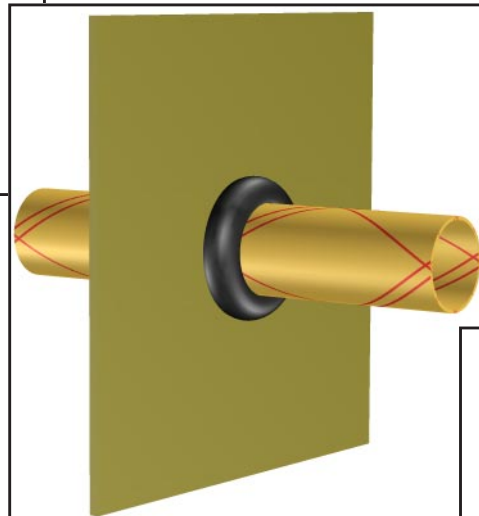
Applications Manual SPLIT REPAIR PRODUCTS

for

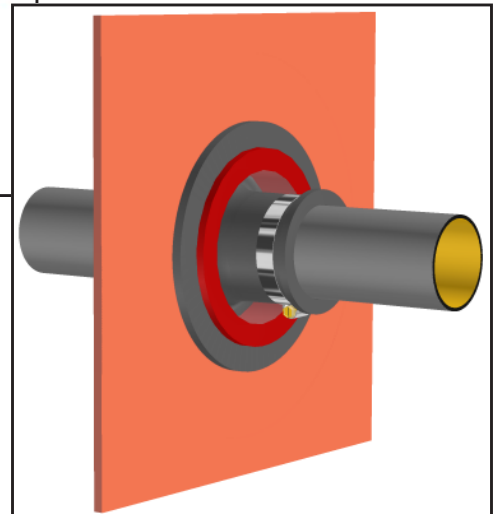
Penetrations without fittings, Uniseals by Topp Industries
PERMA-LOCK fittings by CTC



**Penetrations
without
seals**



**Uniseal grommets
by
Topp Industries**



**PERMA-LOCK seals
by CTC**



This application manual for Diversified' split Repair Products concentrates on pipe entries into sumps that were not sealed using a penetration fitting or where grommet type seals were used. The snap in type seal was readily accepted early on due to cost. The use of these seals died out in the late 1990's as it became apparent that better technologies would be required to affect a sump seal.

Two products were prevalent , the Uniseal distributed by Topp Industries and the *PERMA-LOCK* seal distributed by Containment Technologies.

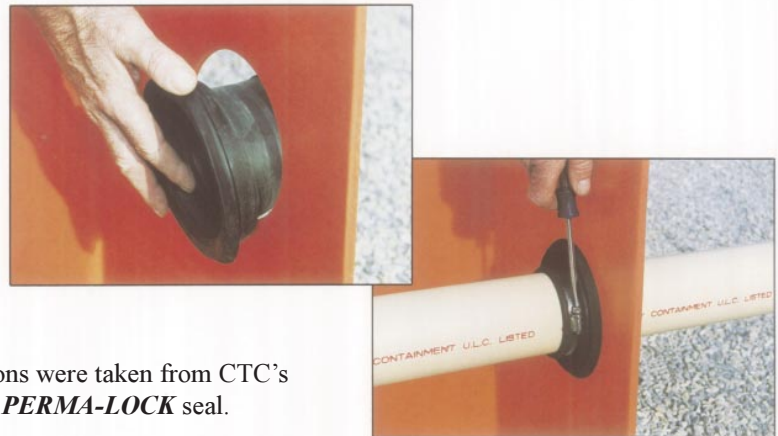
Uniseals

This seal essentially is a grommet that creates a seal by expanding a rubbery material by forcing a pipe through an undersized grommet. They were predominantly used on Total Containment's early systems, Fiberglass pipes and Conduit fittings. There was a wide range of sizes available for almost any application.



PERMA-LOCK Seals

These seals were made for and distributed by Containment Technologies until Containment Technologies terminated operations in the late 1990's. The *PERMA-LOCK* seal looks similar to the uniseal grommet from inside the sump with the exception of the use of a band clamp used to tighten the seal to the pipe penetrating the sump. The grommet portion of the seal is held in place by a snap in ring. These seals were often used with the CTC piping and sumps systems. CTC's sumps and corrugated isolation ducting were bright Orange. The following illustrations were taken from CTC's catalog. They graphically depict the installation of a *PERMA-LOCK* seal.



Two approaches to repairing these seals may be successfully used. In the first application, select a repair boot larger than the outside diameter of the seal and install according to the following details. This may be quicker, however a significantly larger volume of fill and bonder material will be required thus making the materials portion of the repair more expensive. The second option is to remove the seal by cutting or die grinding the rubber portion of the seal away. In this instance the repair will be similar to that of a site that has no penetration fitting. A significant reduction in the volume of the bonder and fill will be achieved if the compression portion of the seal is removed.



Typical Installation

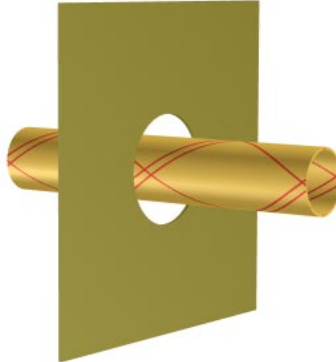
Warnings:

- (1) Read installation instructions
- (2) Read MSDS sheet
- (3) Use appropriate eye and skin protection

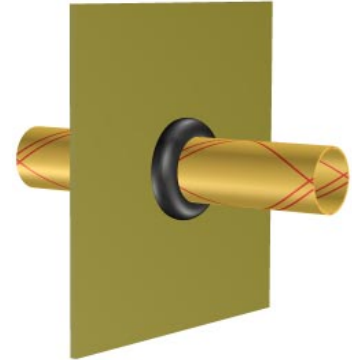
Tools Required

- 1) Knife to cut away rubber boot
- 2) Sanding capability to remove glaze on sump wall
- 3) Drill with 3/8" nut driver for Tek screws

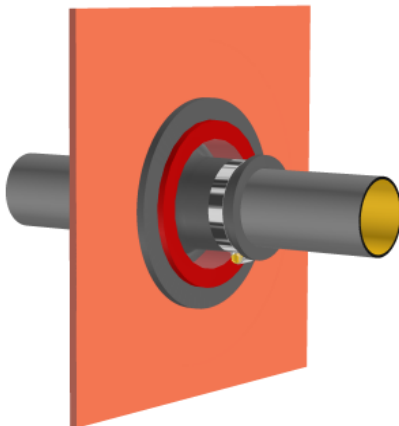
Typical installation
pipe penetration without a
penetration fitting



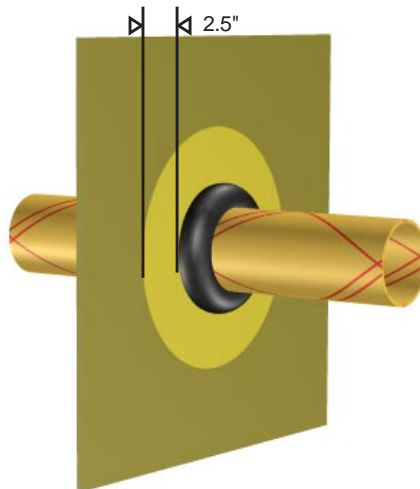
Typical installation
pipe penetration with a
Uniseal fitting



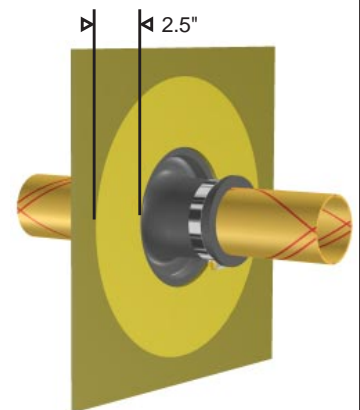
Typical installation
pipe penetration with a
Perma-Lock seal.



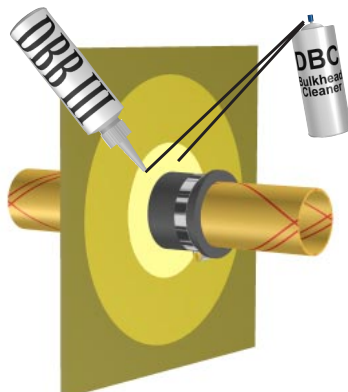
Option 1: Leave seal in place and
sand surfaces as shown



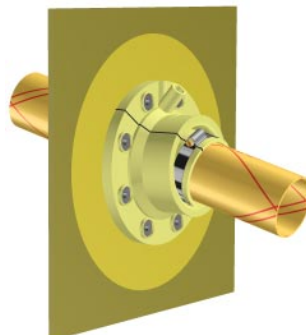
Option 2: Remove flange portion of
seals and sand surfaces as shown
Sand glaze off fiberglass wall
minimum of 2.5".



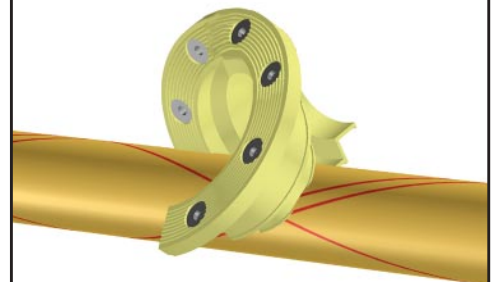
Spray with DBC cleaner then
fill any gap with DBB III bonder



For 2" pipe or conduit that is not
perpendicular to sump wall (High
offset), use rolling style units, i.e.
RB8-3.5x2.4R

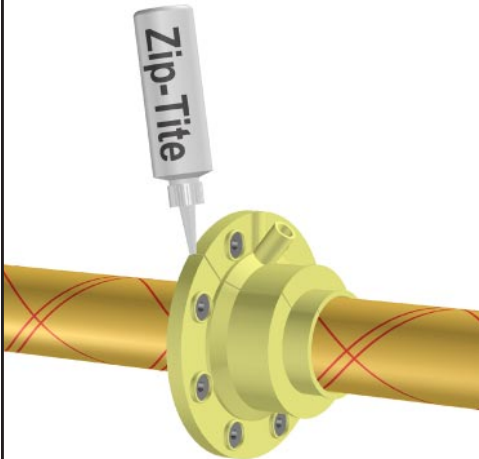


Select proper repair boot and
snap around pipe.
See chart at end of bulletin.

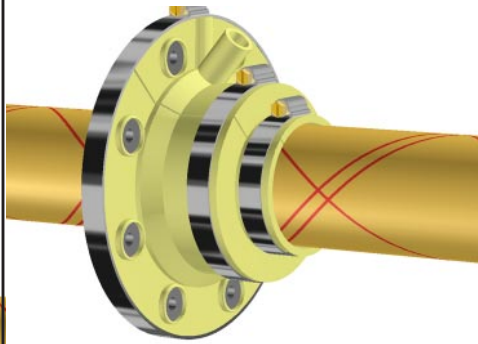




Solvent weld boot together
using Zip-Tite

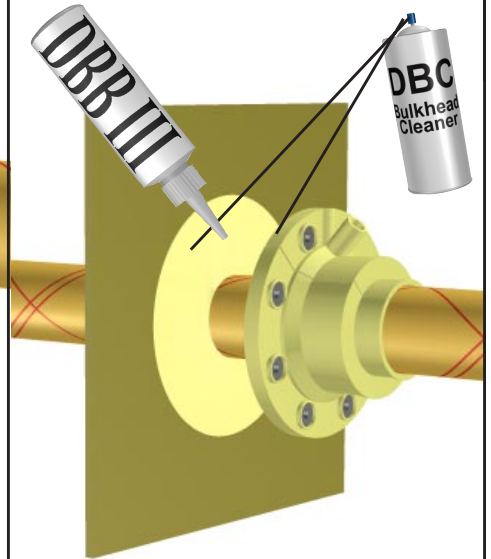


Install clamps to hold bulkhead form
while curing

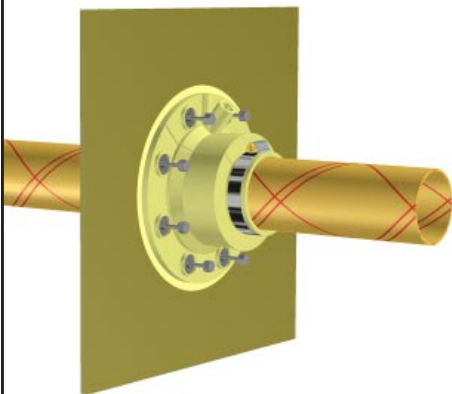


Curing takes 1/2 to 1 hour

Spray all surfaces to be bonded with
DBC, let dry. Apply bonder to sump
wall and repair boot.

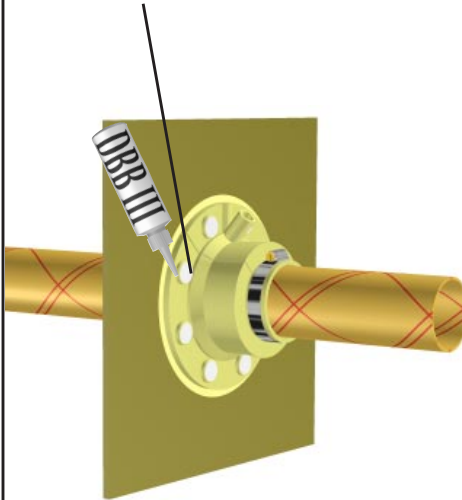


Tek screw repair boot to sump wall.
Wipe off excess bonder.
Clamp Repair Boot to pipe.

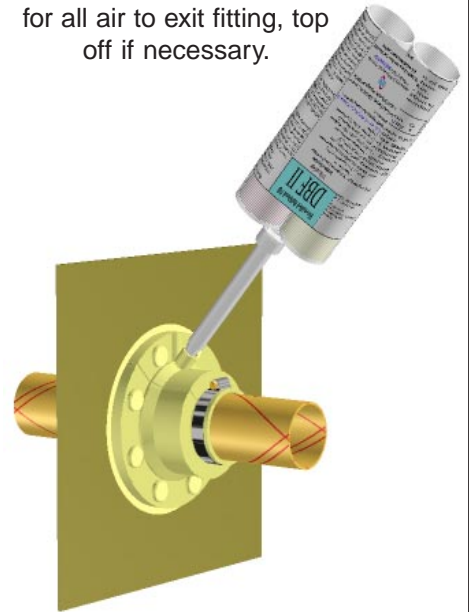


Repair boot will conform
to round sumps.

Cover heads of Tek
screws with bonder



Fill with DBF II until fill exits
vent. Allow sufficient time
for all air to exit fitting, top
off if necessary.



See the following page for a matrix of pipes & Repair Boot Sizes



Application Matrix

| | No Penetration Fitting Installed | | Uniseal Left In Place | | | | PERMA-LOCK Seal left in Place | | | |
|--------------------------|----------------------------------|--------------------------|-----------------------|------------|----------------|-----------------------|-------------------------------|------------|----------------|------------------------|
| | Hole Size | Repair Boot | Hole Size | Fitting OD | Product Number | Repair Boot | Hole Size | Fitting OD | Product Number | Repair Boot |
| ** 1/2" Rigid Conduit | variable | RB 4-1.4(R) w/IZ 1.4x.9 | 1 1/4" | 2 | U050 | RB 8-1.4 w/IZ 1.4x.9 | 1 1/8" | 2 1/4" | PL 1/2 | RB 8-1.4 w/IZ 1.4x.9 |
| ** 3/4" Rigid Conduit | variable | RB 4-1.4(R) w/IZ 1.4x1.1 | 1 1/4" | 2 | U075 | RB 8-1.4 w/IZ 1.4x1.1 | 1 1/4" | 2 3/8" | PL 3/4 | RB 8-1.4 w/IZ 1.4x.1.1 |
| ** 1" Rigid Conduit | variable | RB 4-1.4(R) | 1 3/4" | 2.465 | U100 | RB 8-1.4 | 1 1/2" | 2 5/8" | PL 1/2 | RB 8-1.4 |
| 1 1/4" Steel | variable | RB 8-2.4 w/IZ 2.4x1.7 | 2" | 2.812 | U125 | RB 8-2.4 w/IZ 2.4x1.7 | | | | |
| 1 1/2" FRP or Steel Pipe | variable | RB 8-1.9 | 2 1/2" | 3.2 | U150 | RB 8-1.9 | 2 1/4" | 3 3/8" | PL 1 1/2 | RB 8-1.9 |
| ** 2" FRP Pipe | variable | RB 8-2.4(R) | 3" | 3.812 | U200 | RB 8-2.4 | 5" | 6 1/8" | PL 2 | RB 12-2.4* |
| 2 3/4" | variable | | 4" | 4.68 | U275 | | | | | |
| 3" FRP Pipe | variable | RB 8-3.5 | 4" | 4.7 | U300 | RB 10-3.5 | 5" | 6 1/8" | PL 3 | RB 12-3.5* |
| 3.9" TCI "A" Pipe | variable | RB 10-3.9 | 5" | 5.812 | U390 | RB 10-3.9 | | | | |
| 4" FRP Pipe | variable | RB 10-4.5 | 5" | 5.812 | U400 | RB 10-4.5 | 6" | 7 1/8" | PL 4 | RB 12-4.5* |
| 4.9" TCI "B" Pipe | variable | RB 12-4.9 | 5 1/2" | 6.28 | U490 | RB 12-4.9* | | | | |
| 5.9" TCI "C" Pipe | variable | RB 14-5.9 | 7" | 8.125 | U590 | RB 14-5.9 | | | | |
| 6" FRP | variable | RB 14-6.7 | 7" | 8.125 | U600 | RB 14-6.7 | | | | |

* Seal will need to be trimmed to less than 6" OD for RB 12 to fit over The **existing** Seal

** Available with integral roll for highly offset penetrations. Specify -R after product number.

Check with factory for availability of 14 stud repair boots

Some repair boots need inserts to fit the specified pipe. Check with factory as new products may be available that do not require inserts.

INSTALLATION EQUIPMENT NEEDED

DAG Applicator Gun

RBIK Installation Kit (Which Includes:)

DBB III Bonder (16 oz)

DBF II Fill (42 oz)

DBC Aerosol Cleaner (16 oz)

DGK Zip-Tite (4 oz)

Gloves & Static mixers

